

GCAGS

TRANSACTIONS OF THE 49TH ANNUAL CONVENTION



GULF COAST ASSOCIATION
OF GEOLOGICAL SOCIETIES



LAFAYETTE, LOUISIANA • SEPTEMBER 15-17, 1999

STONE

ENERGY

- **Acquire Producing Properties in the Gulf Coast Basin**
- **Development/Exploratory Drilling**
- **Joint Ventures and Farmins**

Contact:

Craig Glassinger or E. J. Louviere - 318/237-0410

625 E. Kaliste Saloom Road Lafayette, LA 70508

Edward Eble - 713/526-8734

Suite 225S

Greenspoint Park II

16800 Greenspoint Park Drive

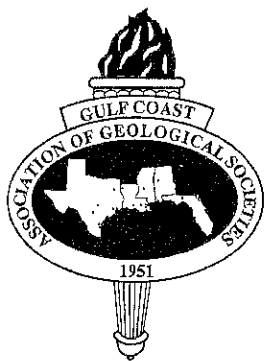
Houston, TX 77060



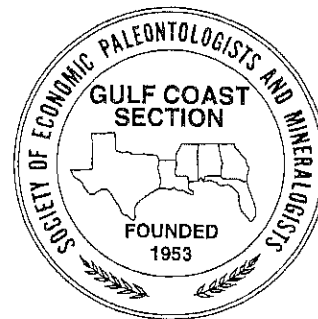
Transactions

Gulf Coast Association of Geological Societies

A Section of the American Association of Petroleum Geologists
with Contributions by the Gulf Coast Section SEPM



Volume XLIX
1999



William C. Terrell and Lana Czerniakowski
Editors

Prepared for

**the Forty-Ninth Annual Convention of the
Gulf Coast Association of Geological Societies**

American Association of Petroleum Geologist Regional Meeting

and

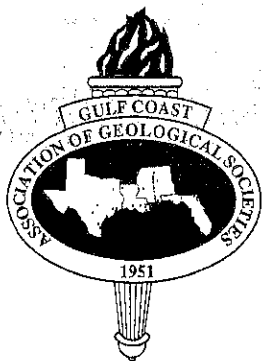
**the Forty-Sixth Annual Convention of the
Gulf Coast Section SEPM**

in

Lafayette, Louisiana
September 15 - 17, 1999

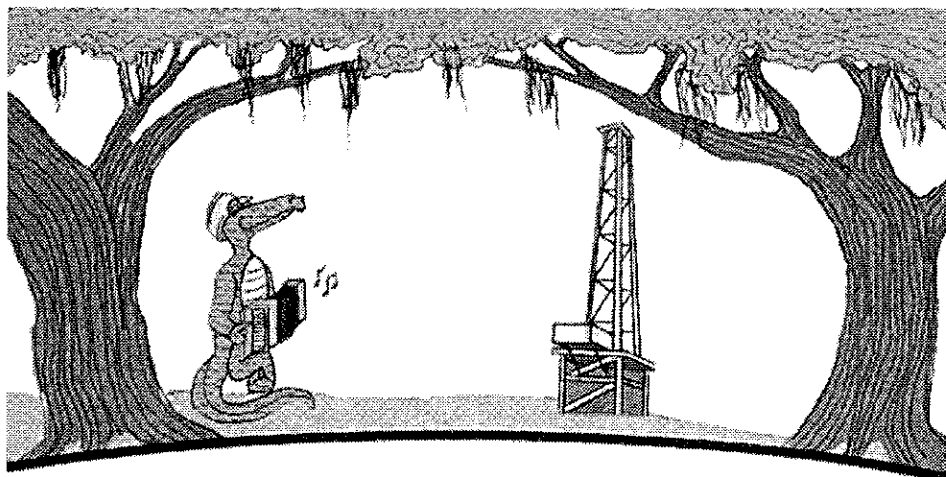
Hosted by the Lafayette Geological Society

Copyright 1999 by the Gulf Coast Association of Geological Societies
No reproductions without permission of the President of GCAGS



Festival Geologique
A Celebration of People, Concepts, and Technologies

G C A G S



G C P E '99

Only those papers, abstracts, and extended abstracts which were submitted directly to the Transactions editors were included in this year's Transactions. Abstracts of all papers and posters presented at the meeting appear in the meeting Program.

Front Cover: The handtinted photograph on the cover is provided by photographer Kent Hutslar. It is of a land rig drilling a relief well at the Bayou Tortue Blowout - 1984.

Dedication

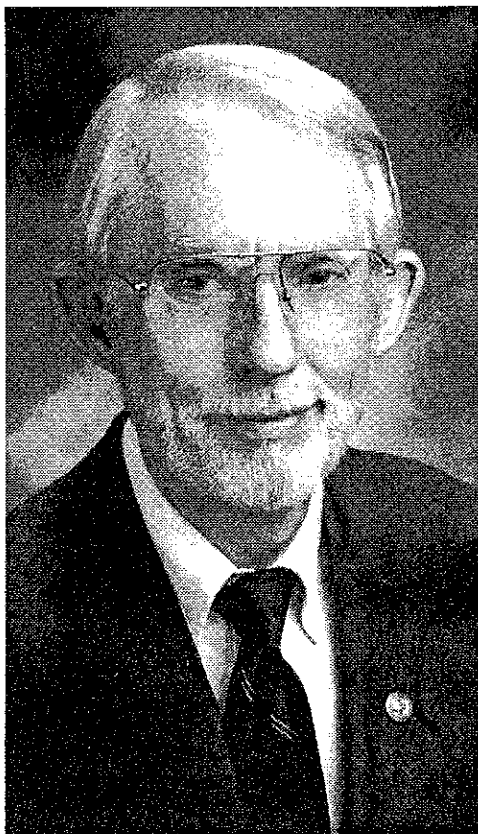
Transactions Volume 49

Peter G. Gray

The Lafayette Geological Society and the officers of the 1999 Gulf Coast Association of Geological Societies are proud to dedicate this volume of the *Transactions* to Peter G. Gray, in recognition of his years of service to our profession in so many capacities.

Pete was born in Houston and grew up in Texas, graduating from Abilene High School in 1950. After two years in the United States Navy, he entered Texas Western College (now the University of Texas at El Paso), and graduated with a B.S. in Geology in 1956. His professional career started with the Pure Oil Company in Houston, for whom he worked in New Orleans, Lafayette and Midland until he returned to New Orleans in late 1964 to join Leslie Bowling, a prominent oil and gas consultant. Over the following years Pete worked for various companies in New Orleans and, later, Lafayette, including An-Son Corporation, Consolidated Gas Supply Corporation, Stone Oil Corporation, Cornell Oil Company and Lyco Energy Company. Since 1982, he has been an Independent/Consulting Geologist, including companies such as Citation Oil and Gas and Sooner Resources amongst his clients. Pete's career has involved him in prospect generation and evaluation, field work, unitization and expert witness testimony, and the various administrative duties surrounding oil and gas activities.

The most remarkable aspect of Peter Gray's career has been the incredible degree to which he has given his time to professional organizations, as well as to his church and other groups. He became an active member of AAPG in 1956 and a Certified Petroleum Geologist (#811) in 1966. He has been an AAPG Delegate through four terms, and served as Vice-Chairman of the House of Delegates in 1982-1983. He has been active in the Division of Professional Affairs, of which he was President in 1993-1994. He was a candidate for AAPG President-Elect in 1997-1998. In 1996, Pete was honored with the Division of Professional Affairs'



Distinguished Service Award.

His service to the GCAGS has also been great. He was Treasurer in 1970-1971, Vice-President in 1976-1977 and 1988-1989 and President in 1989-1990. At present, he is chairman of the Long Range Planning Committee, and he has represented the Association on the AAPG Advisory Council (1995-1998). Pete became an Honorary Member of GCAGS in 1993.

Other societies that have benefited from Pete's dedicated service include the New Orleans and the Lafayette Geological Societies; he is a Past-President and Honorary Life Member of both. He serves on the national Board of Directors of SIPES and has been President of the Lafayette Petroleum Club. Outside his professional activities, Pete has given much time and effort to his church (the Episcopal Church of the Ascension, in Lafayette) and to the Ulster Project, which attempts to bring Catholic and Protestants from Ulster together through

their children.

Pete is married to Julaine and the couple have two grown sons.

In revising this summary of Pete's qualifications (most of the data were originally compiled by Louis Lemarié), I have become impressed with the repeated occurrence of the word "Service" — the word epitomizes Peter G. Gray, and in dedicating this volume of the *Transactions* to my friend I realize how much the honor from the association is one that accrues to the GCAGS, rather than to Pete. We are lucky to have a man of his integrity, energy and ability devote so much of his life to our organization. Pete; we are honored to count you our colleague! May the 49th volume of the GCAGS *Transactions* always remind us of you.

Brian E. Lock

Memorial

Bob F. Perkins

1929-1999

Bob F. Perkins, a Charter Member of the Gulf Coast Section of SEPM and Executive Director of the GCSSEPM Foundation for the past sixteen years, died unexpectedly on April 11, 1999 at his home in West Hartland, Connecticut. His death closes an extraordinary life of service to the sciences of Geology and Paleontology, of a career dedicated to higher education, and especially of his most generous devotion of time, talent, and organizational abilities for the Gulf Coast Section of SEPM Foundation. In essence, Bob was the Foundation. Through his personal efforts with the annual research conferences, the organization achieved international prominence among petroleum industry geoscientists and with university geology faculty and students.

Bob was born in Greenville, Texas, northeast of Dallas - the city in which he grew up. He attended Southern Methodist University and received his B.S. (1949) and M.S. (1950) degrees in Geology. For his doctoral studies, Bob enrolled at the University of Michigan, from which he received his Ph.D. in 1956. After spending two years in residence at the University of Michigan, he taught at SMU and the University of Houston while working on his Ph.D. Bob joined Shell Development Company in 1957 to work with Frank Lozo in carbonate research. In 1966 his academic interests brought him to Louisiana State University's School of Geosciences, where he ultimately became Chairman. I believe it was here that Bob discovered and nurtured his love of editing and publishing quality books. Through his efforts the series *Geoscience and Man* was created and he edited many issues featuring articles on geology, paleontology, geography, anthropology and archaeology - all units of the School of Geoscience. In 1975, Bob returned to the Dallas area to accept the position of Professor of Geology and Dean of the Graduate School at the University of Texas at Arlington.

After serving twenty years in this position to 1995, one would think that Bob would have been content in his retirement, put his feet up, and let other folks do all the work.



However, he continued to serve as Executive Director for the GCSSEPM Foundation. Not only did he handle the affairs of the Foundation, he also maintained the membership database file of the Section and was editor and publisher of the Section's quarterly newsletter.

The first very successful GCSSEPM Research Conference was held in 1980. Bob was Vice President of the Section in 1978-79 and President in 1980-81, and was also Co-chairman of the steering committee for this initial conference. He immediately recognized the value of these conferences in disseminating focused geological topics among both the petroleum community and research in academia. In discussions concerning the preparations of the 1980 conference, Bob proposed the creation of an GCSSEPM Foundation that would be responsible for the confer-

ences. This foundation would also be established as an IRS 501-(c)(3) tax-exempt entity in order to accept donations from corporate sponsors and individuals for financial support of the research conferences. Thus, in 1983 the Foundation was chartered and the third annual GCSSEPM Research Conference was the first to be sponsored by the Foundation. Owing to his penchant for organizing, editing, and publishing, in 1983 Bob volunteered his services as Executive Director of the GCSSEPM Foundation and continued in this role until his untimely death.

Bob Perkins' efforts for the annual research conferences sponsored by the GCSSEPM Section's Foundation have placed them into national and international prominence as the yearly sedimentary geology research meeting to attend. One can state that the continuing success of these popular conferences can be attributed directly to Bob's multifaceted skills. Once the technical theme was selected, with designated Co-chairmen and committee, Bob worked with the authors and this team in editing manuscripts for the Proceedings Volume. Bob worked directly with the printer in having the volume printed and shipped for the conference. These volumes provide a permanent legacy of the conference and are tools for reference and further research. Several

conference Proceedings Volumes have been reprinted — a clear testimony to the continuing relevance of the technical materials contained. In addition to the technical aspects of each meeting, Bob made all arrangements with the conference facility, right down to the selection of the luncheon menus. Another extremely valuable service was that he personally handled all advance registrations for the conferences. This often meant responding to many e-mail messages and occasionally answering international phone calls at odd hours of the night. In addition to these activities Bob also handled all conference advertising and publicity. Therefore, the impact he had on these conferences was tremendous. I can think of no one who has done more over the years to continually place first-rate worldwide geological information in the hands of both academic and industry colleagues.

Bob was active with Foundation activities almost to the time of his death. From July 1998 until March 1999, he labored with the editing for the publication of the GCSSEPM's Taxonomic Equivalency Project Committee's book titled *Gulf of Mexico Basin Biostratigraphic Index Microfossils: A Geoscientist's Guide, Foraminifers and Nannofossils – Oligocene through Pleistocene*. The editing was completed in mid March and he personally printed and shipped from his home copies to be sold at the April 1999 AAPG Convention. This was no small undertaking—the book contains 215 illustrated data sheets, two tables and three charts—all of which had to be assembled into three-ring binders. His superior skills with regard to publication formatting and editorial style are clearly evident in this attractive and useful reference book.

Bob was a prolific author as well as a gifted editor. During his early academic career he was an avid researcher of Cretaceous rudistids and many of his early publications focused on the systematics of these fossil mollusks. Through the years he developed an extensive collection of these Cretaceous reef-builders. Only recently did he donate the collection to the Paleontological Research Institution for preservation for future researchers. He also published on the paleontology and paleobiology of Mesozoic reefs in the Gulf of Mexico, Caribbean and Mediterranean basins and the paleoecologic and biostratigraphic implications of trace fossils. When writing his SEPM Honorary Membership Award citation for 1998 he provided me a "selected publications" list of his works that contained twenty-two titles. However, a search of the Geo-Ref archives reveals over one hundred and twenty citations. In addition Bob was an Ad Hoc Editor for many scientific journals including the *Journal of Paleontology*, the *Bulletin of the American Association of Petroleum Geologists*, *Journal of Sedimentary Geology*, *Science*,

Palaeogeography -Palaeoclimatology-Palaeoecology (Amsterdam), various research publications of the Instituto de Geologia de Mexico, and for the Tulane University Studies in Geology series.

In addition to the Gulf Coast Section of SEPM and the Society for Sedimentary Geology (SEPM), Bob belonged to many professional organizations. Among them are: Society of Sigma Xi, Fellow of the Geological Society of America, Fellow of the American Association for the Advancement of Science, The Paleontological Society, American Association of Petroleum Geologists, Paleontological Association (Great Britain), and the Malacological Society of London. He was especially generous with his time for the Society of Sedimentary Geology (SEPM). Bob served on their Research, Publications, Nominations, and Trace Fossils Committees. He was the organizer and leader of many field trips associated with meetings from 1971 through 1983. Also, from 1968-1973 he served as The Paleontological Society representative to the Executive Council of the American Association for the Advancement of Science.

Through the years Bob received many professional honors and awards. As mentioned earlier, last year he received Honorary Membership in the Society of Sedimentary Geology (SEPM). He was awarded Best Paper Presented at the Society of Economic Paleontologists and Mineralogists Annual Meeting in 1966. Bob received in 1971 and 1974 Special Citations for Service to SEPM, and received similar citations for service to the GCSSEPM in 1979, 1980 and 1981. He was appointed an Honorary Member of the Gulf Coast Section of SEPM in 1984, and in 1991 the GCSSEPM presented him with a Distinguished Service Award.

Bob F. Perkins meant so much to so many of us that it will be difficult to carry on without him. He truly was the "heart and soul" of the GCSSEPM Foundation. Somehow we must pick up the many tasks he once did. As we attempt to do so, we are comforted in the knowledge that we have his professional and personal standards as a shining example.

Edward B. Picou Jr.

Special Commendation Award

Gulf Coast Association of Geological Societies

Don R. Boyd

From time to time we see an individual among us who is exceptional and unique and widely recognized to be so. Don Boyd is such a fellow. And while there are many facets of Don Boyd that make him exceptional, it is his dedication to the institutions of which he is a part and to which he commits himself that truly distinguishes him. With that dedication one gets the whole Boyd-energy, intellect, and tenacity. One institution that has benefited greatly is GCAGS, and for his long, genuine dedication, the Association takes pride and credits itself in bestowing on Don Boyd its Special Commendation Award.

Don Boyd attended his first meeting of GCAGS 38 years ago, and of the nearly forty meetings since, he has missed but four, and those were due to absolutely unavoidable conflicts. Shortly after that San Antonio meeting in 1961, Don was actively involved in the activities of the Association, and his activity continues to this day.

In 1964, Don was appointed to the just-organized Special Projects Committee, chaired by Lee Meltzer. He continued on that important committee, assuming the Chair in 1971. The name of the committee was changed in 1977 to the Long-Range Project Committee (and more recently to the Long-Range Planning Committee), and Don continued to serve through 1981. From this Committee has come support for several important publications and sound counsel to governing executive committees.

The bibliographies of *Transactions* papers and of Gulf Coast geology, which we all use constantly, got their origination and support from the committee. The *Tectonic Map of the Gulf Coast Region U.S.A.* also owes its origin to the committee, reaching fruition in 1972. Don, as Chair of the Special Projects Committee and also Vice President of the Association in 1971, handled most of the negotiations with AAPG as they became a partner in the final editing, drafting, printing, and distribution of the map. In 1977, the Committee recommended the Association establish a Finance Committee, and it was established consisting of Bill Tucker, Chairman, along with Lee Meltzer and Don Boyd. They put together a financial structure that has served the Association well to this day.



The Scholarship Fund, which now functions as the Financial Aid to Students Committee, was initiated by the Long-Range Project Committee. The Fund, to support student research at Gulf Coast universities, has not only rewarded the work of meritorious students, but it has also advanced our knowledge of Gulf Coast geology.

While President of the Association in 1972, Don launched and handled the first substantial review of the GCAGS Constitution and Bylaws, and in 1977 President Boyer asked Don to chair a committee to further review the Bylaws to accommodate the establishment of the Finance Committee.

In 1974, the GCAGS Executive Committee asked Don to serve as the Gulf Coast Section's representative to the Advisory Council of AAPG. Don's service on the Advisory Council was only one part of an illustrious history of service to AAPG that included a term as Secretary and twice being a candidate for President. The AAPG

has, quite appropriately, honored Don with its Distinguished Service Award and election to Honorary Membership.

For GCAGS, Don has always been there in times of crisis. In 1978 Cambe indicated they would no longer handle GCAGS publications. Don personally asked Bob Boyer to consider taking on the job. Out of this, Earth Enterprises, Inc., came into being, and Bob has been the mainstay of GCAGS publications ever since.

Don Boyd has been an active player at turning points in the history of GCAGS. Don recalls that one of the most memorable meetings he ever attended was a mid-year meeting in 1967 called by President Wilford Stapp to consider whether GCAGS should affiliate with AAPG. Don was there representing the Corpus Christi Geological Society and reports that he had never seen a meeting with such tension. The atmosphere was absolutely charged as the merits of affiliation versus autonomy were heatedly debated. Don voted for affiliation, which finally passed. The record shows that affiliation was to the lasting credit of both associations.

Since 1991, the GCAGS has given an Outstanding Educator Award to those truly exceptional college and university faculty whose work has benefited the geological profession and the

Association. The creation of this award came directly from a proposal by Don Boyd to the Executive Committee. He had the inspiration for the award after attending an Eastern Section meeting of AAPG in 1990 and observing their recognition of educators.

But when it comes to dedication to GCAGS Don Boyd never ceases nor hesitates. In the middle of organizing the 1998 meeting of the Association to be held in Corpus Christi, the General Chairman for the meeting, Gloria Sprague, transferred to Austin. In true fashion, Don, as Vice-Chairman, took the lead for the host society and put on one of the most memorable Association meetings in recent years. Don also raised \$81,000 for the meeting, which in the final tally showed a surplus of more than \$80,000. While a lot of people worked hard to organize the meeting, the sure hand of Don Boyd was clear.

In GCAGS, Don has served as President, committee member, and meeting chair and has assisted many times and many ways informally as well. In 1981, Don was a member of the first class of individuals elected to Honorary Membership in the Association. The 1994 *Transactions* of the GCAGS were dedicated to Don, and

those who were present in Austin that day in October will not soon forget his moving response. For there we learned much of the man, even those of us who have known him for a long time.

Don's example of the human spirit is inspiring. He is not afraid of being tough when the situation calls for it, and, as a good friend, he gives counsel, critical if necessary, but always in a profoundly civil way. In the several institutions in which he has been involved, including GCAGS, he becomes an organizational conscience, defining the right, fair, and effective way of doing things.

So with this Special Commendation Award the Association means to recognize the magnitude of Don Boyd's contributions and dedication to this institution and to salute his accomplishments as a scientist, a professional, a leader and supporter, and a true and valued friend.

William L. Fisher

Past Special Commendation Award Recipients

Birdena Schroeder (1996)

Don Boyd (1999)

Past Honorees of *Transactions* Dedications

Gulf Coast Association of Geological Societies

Year	Host City	Transactions Dedication	Year	Host City	Transactions Dedication
1951	New Orleans	None	1980	Lafayette	Seven Founding Fathers of GCAGS +++
1952	Corpus Christi	None	1981	Corpus Christi	W. Armstrong Price
1953	Shreveport	None	1982	Houston	Rufus J. LeBlanc, Sr.
1954	Houston	None	1983	Jackson	Jules Braunstein*
1955	Biloxi	Lloyd William Stephenson	1984	Shreveport	J. M. Forgotson, Sr. & William M. Plaster
1956	San Antonio	None	1985	Austin	Lyman Dorgan Toulmin*
1957	New Orleans	Henry Van Wagenen Howe	1986	Baton Rouge	Harold Veral Andersen
1958	Corpus Christi	None	1987	San Antonio	M. O. Turner
1959	Houston	Alexander Deussen*	1988	New Orleans	Lee Hilliard Meltzer
1960	Biloxi	Honored Five Geologists†	1989	Corpus Christi	William L. Fisher
1961	San Antonio	None	1990	Lafayette	Frank W. Harrison
1962	New Orleans	None	1991	Houston	James O. Lewis
1963	Shreveport	Clarence L. Moody*	1992	Jackson	Frederic Francis Mellen*
1964	Corpus Christi	None	1993	Shreveport	C. Lane Sartor
1965	Houston	Dr. Henryk Bronislaw Stenzel	1994	Austin	Don R. Boyd
1966	Lafayette	Dr. Grover E. Murray	1995	Baton Rouge	Harold N. Fisk*
1967	San Antonio	John Roy Sandidge	1996	San Antonio	Don F. Tobin
1968	Jackson	GCAGS Steering Committee 1949-50 ††	1997	New Orleans	Thomas H. Philpott
1969	Miami	None	1998	Corpus Christi	Paul M. Strunk
1970	Shreveport	Dr. C. O. "Clay" Durham	1999	Lafayette	Peter G. Gray
1971	New Orleans	Jules Braunstein			
1972	Corpus Christi	Michel T. Halbouty			
1973	Houston	Edward H. "Rainey" Rainwater*			
1974	Lafayette	William R. Paine			
1975	Jackson	William Maurice Ewing*			
1976	Shreveport	Claude N. Valerius			
1977	Austin	David Edward Frazier*			
1978	New Orleans	M. Gordon Frey & Leslie W. Bowling*			
1979	San Antonio	Peter T. Flawn			

*Deceased at time dedication was made.

†Paul Livingston Applin, Mrs. Esther Richards Applin, William Clifford Morse, Herman Gunter & Bernard William Blanpied

††Leslie Bowling (New Orleans), R. W. Eaton (East Texas), Thomas H. Philpott (Shreveport), E. R. Earl (Houston), R. D. Sprague (Mississippi), W. R. Farley (South Louisiana) & W. H. Wallace (Corpus Christi)

†††Phillip R. Allin, Leslie Bowling, A. P. Claudet, W. B. Neal, Thomas Philpott, Francis Stein & D. D. Utterback

Major Industry Sponsors

The following companies have graciously supported the Forty-ninth Annual Convention and the Gulf Coast Prospect Expo '99. Their generous contributions have permitted us to present a full program of technical sessions, to publish the Transactions volume, present short courses, conduct field trips, hold sporting events, and for other essential items for the convention and prospect expo. Their support assures a successful meeting.

PLATINUM SPONSOR

Conoco, Inc.

GOLD SPONSORS

Baker Atlas,
A Division of Baker Hughes

BHP Petroleum

Landmark / Geographix

Phillips Petroleum

Schlumberger Oilfield Services

Spirit Energy 76

SILVER SPONSORS

Apache Corporation

C.H. Fenstermaker & Associates, Inc.

John E. Chance & Associates, Inc.

Chevron, North America E & P

CNG Producing Company

Halliburton Energy Services

Pioneer Natural Resources Company

Subsurface Consultants & Associates, LLC

Contents

Dedication of Transactions.....	iii	Outstanding Educator Award, GCAGS.....	xxxv
Memorial to Bob Perkins.....	iv	Past Recipients Outstanding Educator Award.....	xxxvii
Special Commendation Award.....	vi	1999 A. I. Levorsen Memorial Award.....	xxxviii
Past Special Commendation Award Recipients.....	viii	1999 Excellence of Presentation Award GCAGS.....	xxxix
Past Honorees of <i>Transactions</i> Dedications.....	viii	1999 Best Poster Awards, GCAGS.....	xli
Sponsors.....	ix	Past Recipients, Excellence of Presentation/ Best Paper Awards and A.I. Levorsen Memorial Awards, GCAGS.....	xliv
Report of the President, GCAGS.....	xv	Past Recipients, Best Poster Awards, GCAGS.....	xlvii
Report of the President, GCSSEPM.....	xvii	1999 Best Paper Award, GCSSEPM.....	lviii
Report of the General Chairman.....	xix	Past Recipients Best Published Paper Awards, GCSSEPM.....	lii
Report of the Technical Program Chairman.....	xx	Officers and Committees Forty-Ninth Annual Convention - 1999.....	liii
Report of the Editors.....	xxii	Board of Directors, GCAGS.....	liv
Distinguished Service Awards, GCAGS.....	xxiii	Officers of Member Societies, GCAGS.....	lv
Distinguished Service Award, GCSSEPM.....	xxvi	1999 Executive Council GCSSEPM.....	lv
Past Recipients, Distinguished Service Awards, GCAGS and GCSSEPM.....	xxviii	Financial Aid to Students GCAGS.....	lv
Honorary Memberships, GCAGS.....	xxix	Past Officers and Convention Chairmen, GCAGS.....	lx
Past Recipients, Honorary Membership, GCAGS.....	xxxiii	Past Officers, GCSSEPM.....	lxi
Honorary Membership, GCSSEPM.....	xxxiv	Bylaws, GCAGS.....	lxii
Past Recipient, Distinguished Honorary Membership, GCSSEPM.....	xxxiii	Bylaws, GCSSEPM.....	lxiv
Past Recipients Honorary Membership, GCSSEPM.....	xxxiv		

Abstracts, Extended Abstracts & Technical Papers

Evolution of the Apalachicola Delta: The Last Glacial Eustatic Cycle Anderson, Heather E., and Philip J. Bart.....	6
Interpretation of Coherence Cube™ Processing in the 3-D Workspace Arenson, John, Medvin, Evelyn, and Steven J. Maione.....	73
Charge of Fault-Bounded Reservoirs: Paths and Reserves as a Function of Fault Properties Bai, J., C. L. Decker, and J. S. Watkins.....	7
The Up-dip Norphlet Trend: A Re-vitalized Target for Exploration in Southwest Alabama Baria, Lawrence R.	1

Massive U.S. Crude Oil Losses, 1901-1933: Examples from Caddo-Pine Island and Smackover Fields Barrett, Mary L.	81
Magnitude, Distribution and Impacts of Accidental Brine Spills in the Louisiana Coastal Wetland Conservation Plan Area Bass, Aaron S.	9
Reservoir Continuity and Architecture of the Genesis Field, Gulf of Mexico (Green Canyon 205): An Integration of Fluid Geochemistry within the Geologic and Engineering Framework Becunas, Mark A., Thomas A. Hudson, Josann A. Valley, Wesley Y. Clark, and David K. Baskin.....	89
Diagenetic Influence on Reservoir Development and Quality in the Smackover Updip Basement Ridge Play, Southwest Alabama Benson, D. J., and E. A. Mancini.....	95
Growth Analysis ($\Delta d/d$): Case Histories of the Resolution of Correlation Problems as Encountered while Mapping around Salt Bischke, R. E., W. Finley, and D. J. Tearpock.....	101
Graphical Dip Domain Technique for Projecting Large Growth Faults to Depth Using Imaged Hanging-wall Structure Bischke, R. E., and D. J. Tearpock.....	111
Foraminiferal Biofacies, Local Zonation, and Paleobathymetry of the Hackberry Sequence (Middle Oligocene Frio) of Southwestern Louisiana Breard, Sylvester Q., Arden D. Callender, and Michael J. Nault.....	121
Integrated Paleoecology and Marine Vertebrate Fauna of the Stone City Formation (Middle Eocene), Brazos River Section, Texas Breard, Sylvester Q., and Gary Stringer.....	131
Field Discovery History, Northern Gulf of Mexico: Implications for Future Exploration Brenneke, James C., and W. Hines Austin.....	143
Evolution of the Geological Model, Lobster Field (Ewing Bank 873) Burke, Mitchell K., Gregory L. Brown, and David R. Petro.....	153
Fluvial Deposits and Leaky Aquitards of the Late Pleistocene Shallow Subsurface in Southwest Louisiana Cancienne, Joseph A., Mark Distefano, and William H. Schramm.....	2
Burial and Thermal Maturation History of the Gilbertown Area, Southwest Alabama Carroll, Richard E.	161
Accurate Reservoir Volumes Using 3-D Geological Modeling, Seismic Attributes, and a Workflow Approach Chhibber, Ravi.....	10
Turbidites From the Lower Atoka Formation, Jacksonville, Arkansas Clark, Christian J., Arnold H. Bouma, and Gian A. Constantine.....	171
Base of Salt Determination Utilizing Full Tensor Gradient Data Coburn, Gary W.	25
Detection of Faults at the Earth's Surface by Hand-held Ground Conductivity Surveys, Eastern Texas Davis, Darren, and E. B. Ledger.....	183
Top Seal Character and Sequence Stratigraphy of Selected Marine Shales in Gulf Coast Style Basins Dawson, William C., and William R. Almon.....	189
Migration and Entrapment Multiphase Hydrocarbons: Results from Simple Computer Modeling Experiments Decker, C. L., H. Yuan, J. S. Watkins, and Y. Li.....	11
Late Cenomanian Foraminifera from the Lower Tuscaloosa Formation Across Southern Mississippi Dunn, Dean A., W. Cecil Pettway, and Ulysses Cooley, Jr.	197

Wetlands Regulation and the Oil and Gas Industry in the Gulf Coast Region Enck, Valerie, and C. L. Sherrod.....	203
Comparing Two Models of Source Rock Potential in the Perdido Fold Belt Area, Northwestern Deep Gulf of Mexico Fiduk, Joseph C.	211
Paleocene - Lower Miocene Sequences in the Northern Gulf: Progradational Slope Salt-Basin Deposition and Diminishing Slope-Bypass Deposition in the Deep Basin Fillon, Richard H., and Paul N. Lawless.....	223
Well Data Projection into Undrilled Exploration Areas Using Gravimetric and/or Seismic Isochore Steering Functions Fillon, Richard H., Ronald L. Phair, and Roseanne J. Jowitt.....	241
Production Characteristics of Sheet and Channelized Turbidite Reservoirs, Garden Banks 191, Gulf of Mexico, U.S.A. Fugitt, David S., Charles E. Stelling, William J. Schweller, James E. Florstedt, Gary J. Herricks, and Michael R. Wise.....	253
Maximizing the Value of Your Interpretation Software, an Example: 3-D-Based versus Traditional Seismic Interpretation Glaser, Karen S.	13
Petrology, Paleontology, and Paleoenvironments of Wilds and Lower Nichols Sands: Subsurface Paleocene Wilcox Units in Louisiana Glawe, Lloyd N., Leonard M. Young, and Harry H. Roberts.....	265
Tectonic Evolution and Mechanism of Folding of Mississippi Fan-Fold Belt System, Eastern Gulf of Mexico Haldar, Joydeep K., C. J. O'Byrne, A. E. Berman, and J. Gamber.....	2
Thermohaline Pore Water Trends of Southeastern Louisiana Revisited Hanor, Jeffrey S.	273
Late Miocene Mississippi Fan Fold Belt Effect on Deepwater Deposition in the Atwater Valley Area, Offshore Louisiana Hannan, Andrew E., Norman E. Biles, and George A. Jamieson.....	14
3-D Synthetic Seismic Modeling of Turbidite Sandstones Horkowitz, Kathleen O., William R. Morris, Mark H. Scheihing, and H. De Ville Wickens.....	2
The Dilemma of Assessing Heavy Metal Toxicity Ishphording, Wayne C., and Maria E. Bundy.....	281
Relationship between Drag Fold Geometry and Fracture Production in the Selma Chalk, Gilbertown Oil Field, Southwest Alabama Jin, Guohai, Richard H. Groshong, Jr., and Jack C. Pashin.....	16
Geologic Review: Reducing Oil and Gas Environmental Impacts Johnston, John E., III.....	3
Use of Oil and Gas Platforms as Habitat in the Louisiana's Artificial Reef Program Kasprzak, Rick A.	291
Hydrogeologic Definition of the Norco Aquifer in the Geismar, Louisiana, Area Kirschenmann, Kyle L.	3
New (?) Bioherm-Building Tubular Organism in Jurassic Smackover Formation, Alabama Kopaska-Merkel, David C., and Dieter Schmid	299
Prospective Features Revealed By New 3-D Seismic in Shallow Waters of Chandeleur Sound/Viosca Knoll Lawrence, Marc, A., Hugh T. Logue, and Jess Kozman.....	18
Classification of Porosity and Permeability Category with Regression Trees Li, Haiyan, Hui-Chuan Chen, and Ernest A. Mancini.....	19
Seafloor Morphology and Sediment Paths of the Northern Gulf of Mexico Deepwater Liu, Jia Y., and William R. Bryant.....	4

Sedimentological Features Within the Edwards Group of West-Central Texas Lock, Brian E. and Jasmie Roberts.....	309
Possible Geologic Influence on Salt Falls Associated with the Storage Caverns at Bryan Mound, Brazoria County, Texas Looff, Karl M., and Kurt M. Looff.....	321
Sequence Stratigraphic Analyses of the Upper Cretaceous Deposits, Rio Grande Embayment, Using Well Logs, Cores, and Outcrops Mahmoud, Salah E., Emile A. Pessagno, Jr., and Janok P. Bhattacharya.....	4
Modeling of the Burial and Thermal Histories of Strata in the Mississippi Interior Salt Basin Mancini, Ernest A., T. Markham Puckett, and William C. Parcell.....	331
3-D Seismic Applications for Environmental and Groundwater Reconnaissance Marlin, Donald J., William H. Schramm, and Robert M. Mayer.....	341
Modeling Allochthonous Salt Structures Integrating Microstructural Observations and Laboratory-Derived Salt Rheologies Mazariegos, Ruben A., Neville L. Carter, and James E. Russel.....	349
Sequence Stratigraphy of the Late Miocene-Early Pliocene Peace River Formation, Southwestern Florida Missimer, Thomas M.	357
Mud Hole: A Unique Warm-Water Submarine Spring Located Offshore Southwestern Florida Mitchell-Tapping, Hugh J., Joel Bellucci, Graham Woody, and Thomas J. Lee.....	369
Climatic-Eustatic Control of Holocene Nearshore Parasequence Development, Southeastern Texas Coast Morton, Robert A., Jack L. Kindinger, James G. Flocks, and Laura B. Stewart.....	383
Spatial Variations in Formation Water Salinities, South Pelto and South Timbalier Areas, Eastern Louisiana Continental Shelf Nikiel, Amanda M., and Jeffrey S. Hanor.....	395
Freshwater Depth in the Chicot Aquifer of Southwestern Louisiana During the Holocene Sea Level Lowstand Nyman, Dale J.	22
Dynamic Response of Deepwater Depositional Systems to Growth of the Mississippi Fan Fold Belt, Gulf of Mexico O'Byrne, Ciaran J., Joydeep K. Haldar, Arthur E. Berman, Richard Klecker, and John Martinez.....	403
Stratigraphic Architecture of Upper Jurassic (Oxfordian) Reefs in the Northeastern Gulf Coast, U.S., and the Eastern Paris Basin, France Parcell, William C.	411
Joint Systems Along the Northeast Margin of the Mississippi Interior Salt Basin, Alabama Pashin, Jack C., and Andrew K. Rindsberg.....	417
Malacca 3-D - A Comprehensive Approach to Seismic Acquisition in Transition Zones Pelletier, Kevin.....	33
Assessment and Restoration of a Condensate Spill in a Bottomland Hardwood Forest in the Atchafalaya Basin Penland, Shea, Shaw Thompson, Andrew Milanes, and Steve Tischer.....	425
Bottom Boundary Layer Parameters and Sediment Transport on the Louisiana Inner-Shelf During Cold Front Passages Pepper, David A., Gregory W. Stone, and Ping Wang.....	431
Petroleum Exploration and Stratigraphy of the Lower Cretaceous James Limestone (Aptian) and Andrew Formation (Albian): Main Pass, Viosca Knoll, and Mobile Areas, Northeastern Gulf of Mexico Petty, Andrew J.	439
Textural and Diagenetic Controls on Sandstone Permeability Prince, Christopher M.	41

Stratigraphic Framework of the Mesozoic Sediments of the Mississippi Interior Salt Basin Puckett, Markham T., and Ernest A. Mancini.....	24
New Technology for Characterizing Louisiana's Shallow Coastal Water Bottoms and Predicting Future Changes Roberts, Harry H., W. Winans, C. A. Wilson, and J. Supan.....	451
Geology and Geochemistry of Gas Hydrates, Central Gulf of Mexico Continental Slope Sassen, R., S. T. Sweet, D. A. Defreitas, A. V. Milkov, G. Salata, and E. W. McDade.....	461
Using a Geographic Information System to Determine the Chicot Aquifer System Surficial Confining Unit's Thickness and Location of Sand Lenses, Southwestern Louisiana Sargent, B. Pierre, and C. Paul Frederick.....	5
Achieving Remedial Endpoints Using a Risk Based Approach and Integrated Remedial Technologies to Mitigate Impacted Aquifers at Exxon Chemicals Baton Rouge Polyfins Plant Schramm, William H., Ray Sturdivant, and Frank E. Bains.....	5
GULFNET, a High Precision GPS Network for Measuring Horizontal and Vertical Deformation Across the Gulf Coast Sella, Giovanni, Roy Dokka, and Timothy Dixon.....	6
New Models for the Origin of Shale/Salt-Cored Anticlines in the Gulf of Mexico Using a Modified Area-Constant Detachment Fold Model Spang, John H.	469
The Importance of Cyclogenesis on the Short-Term Evolution of Gulf Coast Barriers Stone, Gregory W.	477
Evolutionary Model of the Jurassic Sequences of the East Texas Basin: Implications for Hydrocarbon Exploration White, Gary W., Steve J. Blanke, and Casey F. Clawson, II.....	487
Evidence for a Local Groundwater Recharge Site in Lafayette, Parish, Louisiana Williams, Christopher B., and Timothy W. Duex.....	499
Mid-slope Bottom Currents off the Louisiana Coast Wiseman, William J., Jr., and Harry H. Roberts.....	505
Characterization and 3-D Modeling of Turbidite Reservoir: A Case Study in Miocene Slope Deposits, Main Pass Area, Offshore Gulf Coast of Mexico Yang, Kexian, Jeffrey M. Yarus, and William P. Catanese.....	53
Stratigraphic Architecture and Dynamic Evolution of Barrier-Bar Lagoon Depositional Systems, Eocene Jackson Group, Duval County, South Texas Yang, Wan.....	509
Prediction of Porosity and Permeability Using a Data Mining Approach: Appleton Field, Alabama Yang, Wen-Tai, Hui-Chuan Chen, and Ernest A. Mancini.....	519
A Technology to Extract Lithology, Porosity and Hydrocarbon Content from Conventional Seismic Data Young, Roger A.	61
Potential Oil Generation Capacity of the North Louisiana Hydrocarbon System Zimmerman, Ronald K.	531

Report of the President

Gulf Coast Association of Geological Societies

Brian E. Lock

On behalf of the Lafayette Geological Society, I would like to welcome all the convention participants to Lafayette and to Acadiana. We think you will find this year's convention particularly satisfying and rather different from that to which we have become accustomed. First, the meeting is being held a month earlier than is usual. This was caused by scheduling problems with our convention site, the Cajundome. The success of the Louisiana Icegators, our ice-hockey team, has helped to place the facility on a sound financial footing, but has resulted in the 'Dome not being available for our convention in October. In turn, the switch to September brought us very close to the dates scheduled for the Gulf Coast Prospect Expo, and both groups were concerned that companies would be reluctant to send their people to two different meetings so close together. Rather than compete, we decided to join forces and offer a joint meeting, so here we are. We think that the combination of the GCAGS technical program with the Prospect Expo should create a strong and attractive meeting which benefits everyone. I understand that the AAPG is planning a similar combined meeting at an upcoming annual convention; they will be watching our meeting with interest!

An additional bonus, or *lagniappe*, to use the Cajun French term, is the *Festival Acadiens* which follows immediately after this year's convention. We hope that many of you will stay on to enjoy the fine food, music and arts and crafts of the festival; Cajun hospitality is famous, so stay with us and *laissez les bon temps rouler*, and "pass a good time."

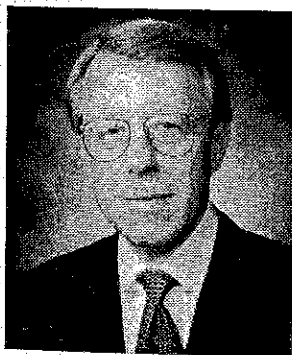


Tim Rynott has taken on the difficult task of General Chairman this year and should be congratulated for all the fine arrangements that have been made. He has been the person principally responsible for the sometimes complex task of combining with the Prospect Expo, and the uncertainties of breaking new ground have been compounded by the uncertain condition of the petroleum industry at the time of writing. He has assembled a great group of people who have worked hard to put together a convention to remember.

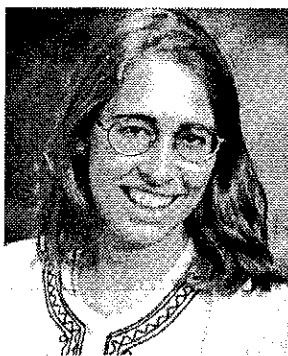
Please plan to attend our opening session. In addition to the usual honorees, we shall be making an award to an outstanding K-12 teacher. This is part of a new program from AAPG. Each local society will be submitting a nominee to the GCAGS Board of Directors, who will select one for special recognition. This person will then be considered by the AAPG, together with teachers nominated by the other regional sections, for national recognition as the

"Excellence in the Teaching of Natural Resources in the Earth Sciences" award winner at next spring's national convention in New Orleans. GCAGS will present our winner with \$1,000 (\$500 for school use and \$500 as a personal award) and a plaque, and the national winner will receive \$5,000, similarly split between the school and the teacher. The Board of Directors feels that teaching of Earth Sciences at the High School level should be supported in every way possible, and hope that the above awards will contribute to this objective.

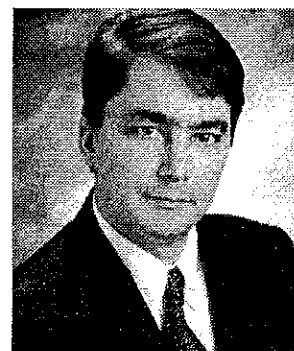
This year, we have decided to dedicate the Transactions vol-



Jeff Lund
Vice President



Jana L. DaSilva
Secretary



Tim Doré
Treasurer

ume to Peter Gray. I have known Pete for many years and am glad we have this opportunity to recognize him for all that he has done for the GCAGS, the Lafayette Geological Society, the AAPG and many other organizations over a long period. Pete epitomizes the word "service."

Elsewhere in the Transactions, you will read a short memorial statement about Bob Perkins, who died in April. Bob had been closely involved with the GCS-SEPM, our partner in these conventions, for several decades. Most recently, he served as Executive Director of the Gulf Coast Section SEPM Foundation. He was a good friend to many of us, and we shall sorely miss him. Another sad loss during the year has been Clarence Schroeder, husband of our Executive Secretary, Birdena. Our thoughts and prayers have been with Birdena during these difficult times. Despite everything, she has continued to be the strength of our organization and everything we do relies on her for advice, help, experience and good common sense.

I have enjoyed my year as GCAGS President; it has been a pleasure to work with our Board of Directors, which comprises the presidents of each of the Gulf Coast member societies, and with the various committee chairmen, who do a lot of work behind the scenes. These fine people are all listed on a later page. My special thanks go to Birdena: Thank you for everything!

Report of the President

Gulf Coast Section SEPM

R.P. Major

It is my privilege as the President of the GCSSEPM to welcome you to the 46th annual Gulf Coast Section SEPM and 49th annual Gulf Coast Association of Geological Societies convention. GCAGS President Brian E. Lock and General Chairman Tim L. Rynott have assembled a hard-working team of geoscience professionals who have done an excellent job of organizing this meeting. The GCSSEPM organizers, whose service to the Section is much appreciated, are Garry D. Jones, Vice Chairman and Transactions Co-Editor; Bill Finley, Program Chairman; Lana A. Czerniakowski, Transactions Co-Editor; and Michael J. Nault, Awards and Judging Chairman.

My excitement and joy at our annual convention is tempered this year by sadness for the untimely passing of our good friend and long-time GCSSEPM member Bob F. Perkins. Bob served the Section in many capacities over the years, including President in 1980-1981, and we have recognized his efforts with a Distinguished Service Award and Honorary Membership. However, it is through Bob's contributions as founder and Executive Director of the GCSSEPM Foundation that he has left his greatest mark on our organization. The Foundation and the Annual GCSSEPM Foundation Research Conferences are Bob's lasting legacy. He was truly the heart and soul of our organization, and it is not an exaggeration to say that he was intimately involved in all that the Section has accomplished in the past twenty years. He will be sorely missed. Please read the Memorial to Bob in this *GCAGS Transactions*.



My last conversation with Bob concerned the shrinking membership and aging demographics of the Section, which are in no small part a consequence of low employment in the oil and gas industry. Bob counseled optimism. Fortunes in our profession have always been cyclical, and Bob was confident that the Section will weather the slow times. I hope you share his optimism.

One of the principal accomplishments of the Section in 1999 was publication of *Gulf of Mexico Basin Biostratigraphic Index Microfossils: A Geoscientist's Guide, Foraminifers and Nannofossils - Oligocene through Pleistocene*, edited by Edward B. Picou, Jr., Norman C. Rosen, Bob F. Perkins and Michael J. Nault. This is the first publicly available product of the Gulf Coast Taxonomic Equivalency Project, which has shouldered the daunting but absolutely essential task of documenting and correlating the various microfossil species names that have been used by Gulf Coast Basin industry micropaleontologists over the past 60 years. The book is a must have tool for all

Gulf Coast geoscientists and is available for purchase through Earth Enterprises in Austin, Texas. Look for more landmark publications from this group in coming years.

The next official GCSSEPM meeting will be the 1999 Annual GCSSEPM Foundation Research Conference, which will be held in Houston on December 5-8. Our theme will be "Advanced Reservoir Characterization for the Twenty-First Century". I am pleased to report that the Program Advisory Co-Chairmen for this meeting, Noel Tyler and I, have secured the services of Tucker F. Hentz as Technical Editor of the meeting proceedings volume. Tucker, with



Harry H. Roberts
Vice President



Ron F. Waszczak
Secretary



Norman C. Rosen
Treasurer

the assistance of a diversely talented Program Advisory Committee, has assembled an outstanding set of papers. I hope to see many of you there. Registration information can be found on the GCSSEPM web site at <http://www.gcssepm.org>.

The GCSSEPM will bestow its highest awards on two individuals at this convention. Honorary Membership in GCSSEPM goes to John M. Armentrout and the GCSSEPM Distinguished Service Award goes to Rashel N. Rosen. Congratulations to both of these outstanding geologists.

As I contemplate relinquishing the office of President to Michael J. Styzen on January 1, I want to offer my thanks to the

hard working officers with whom I have served this year: Vice President Harry H. Roberts, Secretary Ron F. Waszczak, Treasurer Norman C. Rosen, and Past President James O. Jones. Heartfelt thanks also to GCSSEPM Foundation Trustees Nancy Engelhardt-Moore, Edward B. Picou, Jr., and especially Trustee Chairman Michael J. Nault. Mike in particular has had a tremendously positive impact on our Section by picking up the reins from his dear friend Bob Perkins and keeping the Section afloat during this sad time. Thanks, Mike.

It has been both my honor and pleasure to serve the members of the Gulf Coast Section SEPM as President this year.

Report of the General Chairman

Gulf Coast Association of Geological Societies

Tim L. Rynott

The Lafayette Geological Society is pleased to be the host of the 49th Annual GCAGS Convention and the 46th Annual Meeting of GCSSEPM in Lafayette, Louisiana. This convention is both precedent-setting and historically significant. The year 1999 closes out a century which saw a small domestic industry crawl out of its infancy and become the global leader in finding and developing oil and gas resources. Our industry supplied the raw materials which fueled an industrial revolution. We have maintained global leadership longer than any other U.S. industry. We can take incredible pride in our 100 years of hard work, perseverance, and ingenuity and we will look forward to the day our public image is improved and our industry finally gets the recognition it deserves.

The precedent being set this year involves combining GCAGS with a prospect exposition. The prospect expo, or prospect mall, puts buyers and sellers of prospects all under one roof. The spring North American Prospect Expo (NAPE) in Houston and the fall Gulf Coast Prospect Expo (GCPE) in Lafayette have become the preeminent expos. Because dates, participants, sponsors, and geological province all coincided, combining GCAGS and GCPE was an obvious decision. Although the logistics were difficult and time consuming, this "experiment" may prove to be fruitful and should help future convention planners decide the most efficient and productive vehicle to accommodate our diverse membership.

Another difference this year concerns moving the convention date to September, a month earlier than the GCAGS Convention has been held. The Cajundome was not available in October and after all other options were exhausted, we decided to take advantage of the situation and tie our convention to Lafayette's 22nd annual *Festival Acadiens*. This very popular French heritage celebration begins just a few hours after the close of our convention, and features four festivals in one: Cajun music, food, arts and crafts, and native crafts. Hence, our publicity committee came up with the theme for our convention: *Festival Geologique - A Celebration of People, Concepts, and Ideas*.

As to the nuts and bolts of the convention itself, an incredibly dedicated workforce of volunteers has once again provided timely, useful and interesting information in the form of oral technical sessions, short courses, and field trips. This information is meant to make the attendees better scientists and more productive in their professional endeavors.



A full exhibit floor will once again be displaying a variety of essential industry services, with an emphasis on exploration hardware and software. To complement this, a hands-on PC-based 3-D seismic workshop is being offered. Over 20 computers are on loan from the newly organized University of Southwestern Louisiana Energy Institute, and with the help of numerous volunteer instructors, one-on-one tutorials will be provided to all experience-levels of PC-based 3-D seismic users.

Another change this year involves one of the field trips. To lessen the burden for our local volunteers and at the same time encourage the help and expertise of member societies not in the current convention rotation, we asked the Mississippi Geological Society to include their highly successful Bahamas trip in our program. Larry Baria, with the MGS, has run this trip several times and we expect it to be one of the highlights of the convention.

The Thursday night function is being scaled back to a two-hour mixer immediately after the convention on Thursday. Because of this year's unstable economic climate in the oil and gas industry, we were fearful of the financial risk associated with a large extravaganza and also wanted attendees to have the option of experiencing Lafayette's many world-class restaurants.

Speaking of tough economic times, not since the fall of 1986 has generating revenue from sponsorships and advertising been so challenging. We would like to convey our utmost appreciation to our contributors and invite attendees to take time to thank and patronize them. Without their support the cost per registrant would be much higher.

It goes without saying that a convention of this magnitude could not have been accomplished without the tireless efforts of many people. This community is blessed with many talented geoscientists with tremendous work ethics and can-do attitudes. Without their efforts none of this would have been possible. Thank you all.

Special thanks go to Dr. Brian Lock, without whose guidance and prior convention experience, this convention surely would have suffered. Dr. Lock is a great friend and mentor, and has on countless occasions provided a stabilizing force when the going got tough.

We believe this convention offers "something for everyone" and our ultimate goal is that years from now you'll still have fond memories of your trip to Lafayette. Enjoy Lafayette's "joie de vivre", its spice of life, and warm hospitality.



Barry Wawak
Vice-Chairman

Report of the Technical Program Chairman

Forty-Ninth Annual Convention - 1999

William R. Finley, GCAGS



In keeping with this year's theme, *Festivals Geologic*, we have attempted to infuse the technical program with the spirit of Cajun country: *Laissez les Bon Temps Roulez* (Let the Good Times Roll). Hopefully you will find subjects of interest in any session you attend, regardless of your technical background.

We began by attempting to provide a program that matched specific interests of our societies' members. Many of you had the opportunity to respond to a questionnaire expressing your preferences on broad general topics. These preferences were helpful in planning the technical sessions as well as other aspects of the convention. While we are still restricted to those topics submitted for presentation, your preferences enabled us to better organize the sessions around unique themes. As a consequence, many sessions are combined GCAGS and GCSSEPM presentations.

We were fortunate that the sessions fell easily into natural subject groups with minimal overlap. The preponderance of geologic papers fell into a Deepwater classification reflecting the high level of interest in this subject. The two Deepwater sessions were scheduled sequentially for Thursday. There were also numerous Environmental papers submitted, enough for two sessions, obvi-

ously indicating an increasing concern for environmental issues. Other subject topics included the Mesozoic Province, New Technologies, Stratigraphy, and Basin Modeling. These diverse topics enabled us to schedule concurrent sessions to minimize overlap and conflict of subject matter.

Putting together an event of this magnitude is not possible without the leadership and guidance of responsible individuals. We wish to thank Tim Rynott for his selection of committee chairs and continued persistence in making this convention work. Of course the whole thing collapses without the help of volunteers to do the dirty work. We would like to thank Technical Program Committee members: Lana Czerniakowski, Garry Jones, Brian Lock, James Willis, Tim Duex, Joe Brewton, and Dave Watso for their assistance in organizing the sessions. And special thanks go to Bill Terrell for providing us with the abstracts for review as they became available.

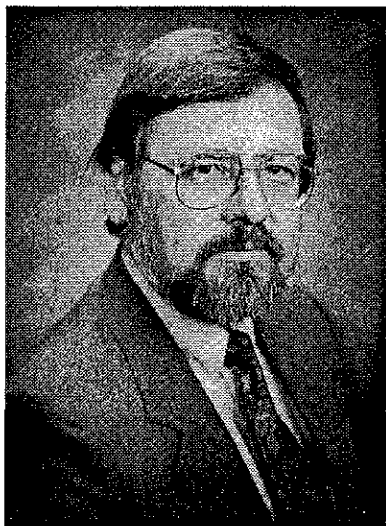
Report of the Editors

Gulf Coast Association of Geological Societies *Transactions*

Volume 49, 1999

William C. Terrell and Lana Czerniakowski

The 1999 Gulf Coast Association of Geological Societies *Transactions* contains a diverse assemblage of papers with representation from nearly every subdiscipline of Gulf Coast geoscience research. Topics include studies of oil and gas fields, sedimentology, stratigraphy, sequence stratigraphy, paleontology, organic geochemistry, basin modeling, hydrogeology, coastal studies, structure, new technologies, and environmental studies. As in prior years, the 1999 GCAGS Program reflects the current state of the



William C. Terrell
GCAGS

industry in the Gulf Coast Region. This year's program has a special emphasis on topics pertinent to the oil and gas exploration in the Deepwater Gulf of Mexico and Environmental studies.

Throughout its history the GCAGS *Transactions* have served as an important reference for Gulf of Mexico Basin researchers. The editors expressly thank the authors for all their hard work, technical expertise and insights. It is these contributions which have helped maintain the high technical standards of the GCAGS *Transactions*.

This year each abstract and manuscript was reviewed by at least one peer and the editors. This required a group of forty-eight reviewers. Although this was a people and time intensive effort, we believe that this methodology has helped to improve technical con-



Lana Czerniakowski
GCSSEPM

tent and quality of the publication and has provided a volume of which the authors, editors and GCAGS can be proud. We would like to thank each reviewer listed below for volunteering his or her time and expertise.

We also extend our appreciation to Karen Broussard and Birdena Schroeder who put together the front matter for the *Transaction*. This enormous task includes assembling the dedications, reports, award winners, committees, Bylaws of the GCAGS, and the Table of Contents.

Jim Dungan receives our congratulations for preparing the advertisements under tight time deadlines. We would also like to thank Chevron USA Production Company for their logistics support. Manuscript layout was provided by Pamela Cantrelle of Cantrelle Design and printing was by Moran Printing of Baton Rouge. A special note of appreciation is extended to Moran sales representative, Rebecca Cantrelle, who helped us understand the processes and costs involved in printing a volume of this size. The lasting impression that Volume 49 will have on everyone is the cover picture, supplied and colored by photographer Kent Hutsler of Lafayette.

Shelia Barnette
Dick Bischke
Mary Broussard
Sam Broussard
Melissa Coleman
Hene Corbo
Tim Deux
Tony Dincau
Tim Dore
John Ellis
Bill Farley
Tom Farley
Bill Finley
Heather Finley
James Tim Ford
Skip Forsthooff

Jim Frambrough
Peter Glagola
Randel Godley
Ted Gard
Myra Hamburg
Gunnar E. Holmes
Steve Johnson
Garry Jones
Gary Kinsland
Marty Link
Brian Lock
Mike Mathy
Dave Metzner
David Naas
Rob Pascoe
John Serbeck

Sunil Shalia
Jack Shirley
Greg Stanonis
Ron Stokes
Smokey Stover
Joseph Studlick
Scott Sumner
Kurt Thomas
Raul Viera
Frank Vincent
Barry Wawak
Kate Weissenberger
James Willis
Joseph Wyszynski
Mark Zastrow
Martha Zastrow

Distinguished Service Award

Gulf Coast Association of Geological Societies

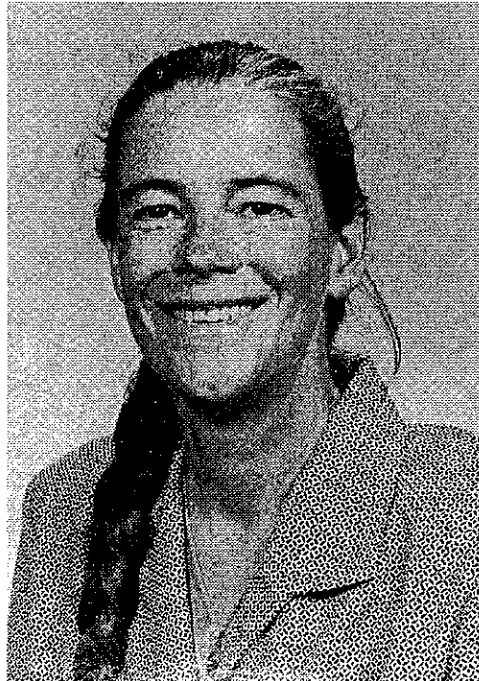
Gloria Sprague

Gloria Sprague was born in Pittsburgh, Pennsylvania in 1952. At the age of 12 she and her family moved to Houston, Texas. She attended Stephen F. Austin University, and graduated Magna Cum Laude, with a BS in Geology. Gloria then went on to receive her Masters Degree in Geology, from Stephen F. Austin University.

Gloria's career started in 1982 with Sun Exploration Company in its Corpus Christi office. The job that she performed was a tremendous training ground for her. She rejuvenated a number of old oil & gas fields that were "presumed" to be depleted. She also generated various over-pressured Vicksburg tests, and was dubbed by her company associates as the "Vicksburg Queen".

From 1988-1989 Gloria worked for W. L. Popejoy in his Corpus Christi office generating prospects for local investors. In 1989 Gloria joined my company, H. P. Ellsworth O & G Properties. Her work "ethic" was absolutely tremendous. She has been accused of doing the work of three people. We drilled many of Gloria's prospects with much commercial success. Gloria's innovative drilling techniques in our horizontal drilling program made it a very lucrative venture. Her experience in the field proved to be invaluable, from logging, testing, and evaluation on the many wells we drilled together.

In 1996, Gloria became an independent Geologist, doing consulting for many firms. Her wellsite geological and logging skills were utilized by many companies. She also worked many geological trends in South Texas.



Currently, Gloria has joined Suemaur Exploration Company, Corpus Christi, as an Exploration Geologist.

Gloria's "can do" attitude is clearly seen by her achievements in the local Corpus Christi Geological Society (CCGS). Her achievements include the following: 1992-1993 she served as Secretary, from 1994-1995 as Vice-President, and from 1996-1997 as the first female President of the CCGS.

In 1998, Gloria was also the General Chairman of the GCAGS Convention held in Corpus Christi, which required many hours of work. The convention was a smashing success.

Gloria's professional affiliations include being a member of the AAPG since 1982, CCGS, SIPES, and the Sigma Xi Scientific Research Society.

Gloria is married to Bill Sprague, who himself is a scientist, and teaches Earth Science at Cullen Junior High School, Corpus Christi. Gloria claims her greatest achievement in life is raising her two won-

derful daughters, Lynne Ann, and Kate.

For over 17 years Gloria has practiced geology in a very professional and ethical manner. She is highly respected by her peers, and always has the time to share her knowledge and assistance in helping others.

H. P. Ellsworth

Distinguished Service Award

Gulf Coast Association of Geological Societies

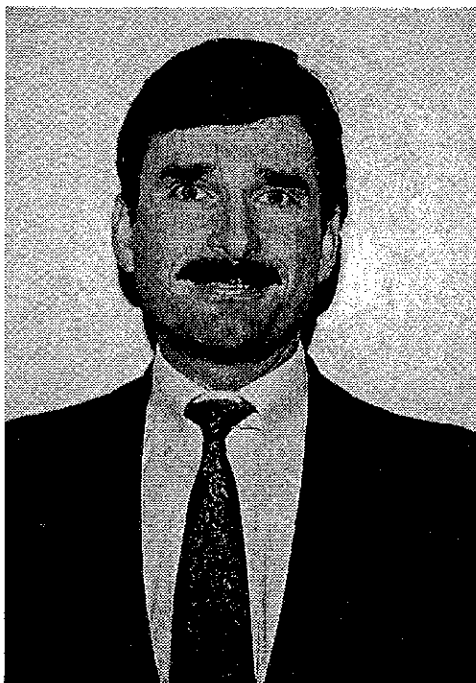
George E. Smith III

The Association's Distinguished Service Award is reserved for those members who have a sustained record of outstanding service to their local society, to the GCAGS, and to other professional organizations. The record of achievement by George E. Smith III clearly begs for this recognition. Therefore, it is entirely fitting that he be presented the Association's Distinguished Service Award at the 1999 GCAGS convention.

George E. Smith, III was born in Georgetown, South Carolina. He attended the University of South Carolina, originally majoring in Marine Science, later switching over to Geology. He received his B.S. in Geology in 1977 and began field mapping with the S.C. Geological Survey as part of a Department of Energy-funded Uranium Evaluation Project. The mapping started as a 7.5-degree quad project, but evolved into a two-county, full-time Masters thesis project. George received his M.S. Degree in Geology in 1979 and immediately began working for Chevron in their New Orleans office.

George's career with Chevron has covered a variety of assignments. He began working in Chevron's regional stratigraphic studies group and later moved into assignments in development geology and exploration geophysics. In 1984, George moved to Chevron's Organization Department, to work on the merger with Gulf Oil. In 1985 he moved to Economic Evaluations, analyzing prospect economics for wells and lease sales. In 1986 George was appointed Division Geologist for the Western Exploration Division, overseeing regional stratigraphic and structural studies in offshore Texas and western offshore Louisiana. George was appointed in 1988 as the Frontier District Supervisor for the western Gulf of Mexico, overseeing Chevron's first subsalt well in the deepwater Gulf of Mexico. George changed to a more technical role in 1992, prospecting for new opportunities around core Chevron offshore fields, in shelf subsalt areas, and in the Vioska Knoll and Mississippi Canyon areas. In 1998, George moved into Chevron Petroleum Technology Company (CPTC) as Center of Excellence Manager, E&P Technical Support, managing technical competency and performance for domestic workstation and desktop PC support personnel. Since mid-1999 George has been working with Chevron Petroleum Technology Company's Reservoir Geology Team.

George has been a long-time supporter of New Orleans Geological Society activities. From 1988 to 1993, George worked on the NOGS Membership / Directory committee. He tackled the



Advertising Committee Chairman role from 1991 to 1997, working with the editors of the monthly newsletter and the annual membership directory. In addition, George has worked on the NOGS Nominating Committee. George has been awarded the NOGS President's award twice and the NOGS Distinguished Service Award. His AAPG activities include working on the AAPG Membership Committee, Tobin Theater Committee Chairman for the 1993 AAPG Convention, and serving as an AAPG Delegate from 1993-97. As a delegate for AAPG, he worked on the AAPG Name Change Ad Hoc Committee in 1996.

In 1995, George became involved with the formation of the 1997 GCAGS Convention, to be held in New Orleans. His role as Administrative Vice Chairman was instrumental in the success of this convention, which received strong reviews as a technical meeting and pacesetter during turbulent times.

At Chevron, George has been involved in earth science recruiting and minority earth science programs since the late 1980s. He has previously been a Chevron sponsor for the summer earth science programs at LSU and UNO. George continues to be a sponsor for the minority earth science program at Fort Valley State University and University of Oklahoma. He also served on the AGI Minority Participation Planning Committee, which awards scholarships to minority earth science students pursuing degrees.

George has always been involved in the community, having served on the Agency Relations Committee for the Greater New Orleans United Way and in various roles associated with Neighborhood Watch and the Lakeshore Citizens Against Crime. George is presently living in Mandeville, LA with his wife, Gabriella, and two children. Coaching youth soccer used to be a part of evening and weekend fun for him, but George is currently using any spare time obtaining an MBA degree at Tulane University.

Clearly, George has been able to divide his time successfully with his employer and family, yet he has also found time to provide diverse services to many professional organizations. He is always willing to accept responsibilities, and once accepted, he executes the duties flawlessly in a gentlemanly way. His dedication and achievements over the past years place him in the select few that have received the Association's Distinguished Service Award.

Edward B. Picou, Jr.

Distinguished Service Award

Gulf Coast Association of Geological Societies

Bonnie Weise

It is an honor to write this citation for Bonnie Weise. Bonnie was born in Taylor, Texas on December 1, 1952, and grew up on the family cotton and sorghum farm near Thrall. Bonnie entered the University of Texas in Austin, and received her B.S. degree in 1974 with highest honors. She was elected to Phi Beta Kappa, received several departmental scholarships and recognitions, and was a member of Phi Beta Phi. She remained in Austin, working for the Bureau of Economic Geology while she worked on her Master's degree, which she received in 1979. Her thesis work, on the San Miguel Formation of Southwest Texas, was presented at the 1979 GCAGS meeting and was published by the Bureau as Report of Investigations 107.

She remained at the Bureau of Economic Geology until 1981, conducting regional subsurface studies of the Wilcox and Frio as part of the Gulf Coast geopressured geothermal project. At the end of 1981, Bonnie moved to San Antonio to take a position with Placid Oil Company as exploration geologist. There she worked on West Texas plays and on the Smackover of East Texas. In 1984, after Placid's exploration office in San Antonio closed, she moved over to Valero Producing Company, concentrating on the Smackover of South Arkansas and the Wilcox of Louisiana.

Since 1986 she has on the staff of Venus Oil Company (now Venus Exploration, Inc.) as geologist, becoming a Senior Explorationist in 1995. She has worked intensively in the Expanded Yegua Trend of the Texas Gulf Coast, playing a key role in the prospect generation that led to the discovery of Vidor Ames Field in Orange County, Texas. She also conceived and carried out a significant trend exploration program in West Texas, and has directed geological work in East Texas and North Louisiana.

Bonnie Weise has been very active in professional affairs throughout her career. She joined the South Texas Geological Society and served as its President in 1983-1984. Since that time she has helped the local society in many ways, including participation on the Scholarship, Research Grant and Program Committees, and as Poster Chairman for the Austin Chalk Symposium in 1991. More recently, she has been working with the editorial staff of the *Bulletin of the South Texas Geological Society*, obtaining interviews with several long-time geologists in San Antonio. She has served as



a Delegate to the AAPG House of Delegates representing the STGS in 1989-1992 and from 1996-1999. She is also a member of the San Antonio Geophysical Society, and a member of the Board of Governors of the Petroleum Club of San Antonio.

Bonnie is a member of AAPG, SEPM, the Houston Geological Society, the West Texas Geological Society, and the Permian Basin Section of SEPM. She is certified by SIPES, and remains an associate of that organization. She is also an AAPG Certified Petroleum Geologist (CPG# 5439). Bonnie has been active in SEPM in many offices, representing the GCSSEPM in San Antonio for many years. For her contribution of time and energy to the Gulf Coast Section of SEPM, she received a Distinguished Service Award in 1997.

She has served with several GCAGS conventions, holding the position of Vice-General Chairman for two GCAGS-GCSSEPM Conventions held in San Antonio in 1987 and in 1996. In this position, she was in charge of all GCSSEPM-related events, working closely with the GCSSEPM President and the Technical Program Chairman, the Editor, and the Awards and Judging chairman. She has chaired the Student Grant Committee, a standing committee of the GCAGS, since 1998.

At annual meetings, Bonnie has served as Poster Session Chairman for three meetings: the 1984, 1989 and 1999 Annual Conventions of the AAPG that were held in San Antonio.

It has been my good fortune to work with Bonnie at Venus Exploration for the last eleven years, and to collaborate with her on the 1996 GCAGS Convention. She is both talented and conscientious in all her undertakings. Her positive attitude and enthusiasm for subsurface geology and professional affairs are infectious and have made a lot of worthwhile things happen. I think I speak for every geologist in San Antonio and the Gulf Coast in saying "Thank You", and in wishing her many more years of effective and successful service.

Thomas E. Ewing

Distinguished Service Award

Gulf Coast Section SEPM

Rashel N. Rosen

Rashel N. Rosen, a distinguished scientist and a dedicated micropaleontologist, is typified by her drive, her persistence, and her refusal to accept professional and intellectual barriers. She was born in Kermenshah, Iran, to a medical family. The private girls' school which she attended offered classes only through the 11th grade. Rashel petitioned the head of school to extend the classes through the 12th grade because she wanted to attend medical school. The principal finally relented with the stipulation that if she found eight other girls who were interested in continuing their education he would add the 12th grade to the curriculum. The next year, there was a 12th grade class. Early on, she demonstrated the drive and persistence that would characterize her professionally.

Rashel attended Tehran University and graduated first in her class, for which she was awarded a scholarship for advanced studies in the United States. Three months at Columbia University in New York convinced her that there must be a better place to live and study, so she transferred to Ohio State University in 1961. I am delighted to say that she and I met on her first day in class and we were married in 1964, by which time she had completed her M.S. degree. She completed her Ph.D. at Louisiana State University in May, 1967. During this time, she also held a two year fellowship from the American Association of University Women.

Packing up her books and several hundred pounds of rocks, she returned to Tehran to teach as well as serve as a consultant for the Geological Survey of Iran, for whom she produced a study of Permo-Triassic conodonts. Recognizing that professional opportunities were limited in Iran, she returned to the U.S. in 1969, after the birth of our son, Eric. At that time, I began working with Texaco in New Orleans. Like most companies, they had a rule that the spouse of an employee could not work for another oil company. At a company picnic, Rashel talked to the Division Geologist and explained to him why their policy was not a good policy. Within three months, she received a job offer, and we became the first couple employed by Texaco. Again, her drive and persistence had broken a barrier.

In her five years at Texaco, she worked the Tuscaloosa, the Summiland, the Oligo-Miocene, and Plio-Pleistocene trends of the Gulf Coast and Nigeria, and the Oligo-Miocene of the Caribbean. She became the first paleontologist to be assigned to an exploration district. To insure that micropaleontology was being used and being used properly, Rashel did prospect work and worked direct-



ly with other geologists and geophysicists. During this period, our second child, Laura, was born.

In 1974, she joined DEMINEX-IRAN Oil Company in Tehran, Iran. During this time, she worked on regional studies, made well proposals, wrote a paleontology manual, co-authored a carbonate manual, set up a sample preparation laboratory, and sat wells for casing points. Her paleontologic work ranged from Ordovician to Recent carbonate and clastic depositional systems, using foraminifers, calpionellids, algae, ostracods, bryozoa, and conodonts. Rashel studied over 90,000 feet of cores, cuttings, and surface samples. It was during this time that she learned to identify fossils in thin-sections. She also did detailed paleontologic work in the Plio-Pleistocene of Nigeria for DEMINEX in Germany.

Returning to the United States, in 1979 she became chief paleontologist for Robertson Research (U.S.). There is not enough space to detail her work during this

time. Briefly, she worked Paleozoic through Pleistocene samples (loose and in thin-section) from the Atlantic offshore, the Gulf Coast basin, offshore China, the Sunda basin, Java, the Philippines, Colombia, Brazil, Peru, Mexico, Guatemala, the Caribbean area, Egypt, Liberia, Morocco, Nigeria, and the Middle East. In addition, she wrote key contributions to numerous regional studies.

In 1983, she joined ARCO in Houston (and transferred to Plano in 1985 and back to Houston in 1986). She began as a Senior Paleontologist, became an Onshore Supervisor, and finally climbing the technical ladder to become Offshore Exploration Advisor. She worked onshore and offshore Gulf of Mexico trends, from the Smackover to the Pleistocene. It was during this time that she began to fit micropaleontologic data to sequence stratigraphic analysis. She even found the time to help the international group in the Middle East. Rashel worked directly with explorationists to insure that they understood the importance and significance of micropaleontological information. Because she was able to answer so many questions so well, they referred to her as the "PaleoGoddess". In 1988, she received an ARCO Distinguished Contribution Award. In 1991, a paper she and two others presented at an ARCO Exploration Technology Conference received an Outstanding Paper Award.

In October, 1991, she joined TGS-Calibre, now Excalibur Interpretation Company. During this time, she has analyzed over 400 wells, ranging from Bulgaria to Nigeria to Gabon to the onshore and offshore Gulf Basin. She continues to work on better

ways of presenting micropaleontologic data so that it can be directly applicable for sequence stratigraphy.

Despite her work load as a professional scientist, wife, and mother, Rashel has also found the time to serve her profession. She has been a presentation judge at several meetings, a session chairman several times, and has served as President of the GCSSEPM in 1996. Because of her recognition of the need for micropaleontologists to communicate better, she is regarded as the 'Mother' of the Paleon-Lunch Bunch in Houston. Perhaps of most enduring significance, is the fact that she has been a driving force in the compilation of the Gulf Coast Taxonomic Equivalency Project, a manual

describing the important Gulf Coast Oligocene through Pleistocene marker fossils. Rashel first attempted to initiate collaboration on the project in 1988. Her persistence has been a determining factor in the success of this project and in its publication this year. If this award is to be given to some one who truly cares about her profession and tries to put this caring into action, she truly deserves this recognition.

Norman C. Rosen

Past Recipients Distinguished Service Awards

Gulf Coast Association of Geological Societies

R. E. Boyer (1982)	J. H. Hefner (1992)
P. B. Souders (1982)	J. G. Samuels (1992)
B. C. Tucker (1982)	T. E. Ewing (1993)
none awarded (1983)	W. R. Payne (1993)
A. T. Green, Jr. (1984)	E. G. Wermund (1993)
Dewitt C. Van Siclen (1984)	D. L. Smith (1993)
C. E. Harrison (1985)	D. E. Pope (1994)
Raymond W. Stephens (1985)	Duncan Goldthwaite (1995)
none awarded (1986)	Howard W. Kiatta (1995)
none awarded (1987)	Carlo C. Christina (1996)
none awarded (1988)	M. R. Douglas (1997)
H. G. Collier, Jr. (1989)	John C. Langford (1997)
R. B. Seigert (1989)	Lee T. Billingsley (1998)
C. J. Corona (1990)	Richard W. Boebel (1998)
R. W. Sabaté (1990)	Walter Coppinger (1998)
C. C. Baker (1991)	Richard N. Hargis (1998)
G. A. "Jerry" Cooley (1991)	George E. Smith, III (1999)
S. Chuber (1991)	Gloria D. Sprague (1999)
C. R. Noll (1992)	

Past Recipients Distinguished Service Awards

Gulf Coast Section SEPM

M. J. Nault (1988)	D. T. Dockery 111 (1993)
R. P. Zingula (1988)	N. G. Shaw (1994)
T. H. Fett (1989)	A. S. Waterman (1995)
D. Joseph Greig (1989)	D. M. Butler-Ford (1996)
B. F. Perkins (1991)	E. B. Picou, Jr. (1997)
S. C. Barnette (1992)	B. R. Weise (1997)
C. C. Albers (1993)	N. C. Rosen (1998)
	R. N. Rosen (1999)

Honorary Membership

Gulf Coast Association of Geological Societies

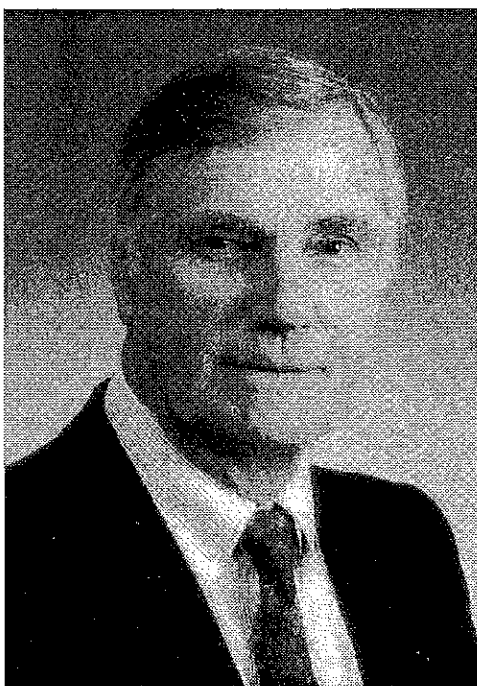
Edmund Gerald Wermund

The Board of Directors of the Gulf Coast Association of Geological Societies has bestowed Honorary Membership on Edmund Gerald (Jerry) Wermund, in recognition of his distinguished professional accomplishments in the region during almost a half century.

Jerry was born on 15 April 1926, in Arlington, New Jersey. After graduation from high school—during World War II—he enlisted in the U.S. Navy, and as part of Naval pre-flight training, he began studies at Franklin and Marshall College, in Lancaster, Pennsylvania. Then after completing his tour of duty at the end of the War, he again enrolled at Franklin and Marshall, which to this day is widely recognized for its strong program in geology. While taking introductory courses, Jerry was inspired by weekly field outings with Professor Richard M. Foose, and owing to this professor's substantial early influence, Jerry majored in geology.

Jerry received his Bachelor's degree in 1948, and then enrolled in Graduate School at Washington University in St. Louis, with the aim of studying metamorphic petrology. But the Korean War intervened, and Jerry once again answered the call to military duty. While serving in the U.S. Army Corps of Engineers at Fort Belvoir, Virginia, he met Harold V. "Andy" Anderson, a professor of geology at Louisiana State University, who was serving in a civilian capacity. Together they developed training courses and manuals for instructing Army engineers in principles of geology.

This war-time association proved to be significant in terms of Jerry's career, for after being discharged from the Army, Jerry moved to Baton Rouge and enrolled in the graduate geology program at L.S.U. There he immersed himself in study and research on sedimentation and stratigraphy under the able instruction and strong leadership of Professors Henry Howe and Grover Murray. From that time on, Jerry's chief professional focus has been on the geology, resources, and environments of the Gulf Coast Region. His Ph.D. dissertation, under the supervision of Grover Murray, was *Glaucinite in early Tertiary sediments of the Gulf Coastal Province*; highlights of this research were published in the *AAPG Bulletin* (1961). During his graduate work at L.S.U. Jerry also developed a keen interest in remote sensing, and his first peer-reviewed article was on this subject. This paper, "Fracture patterns in northwest Louisiana," was published in the *AAPG Bulletin*



(1955), and it forecast important subsequent endeavors in Jerry's professional life.

After graduate school, Jerry was employed for 14 years in industry, first with Mobil Research and Development Corporation in Dallas (1957-1970), and then at Remote Sensing Incorporated in Houston (1970-1971). At Mobil he was involved in research on petroleum and mineral exploration, and during these years he published papers in *AAPG Bulletin*, *Journal of Geology*, *Sedimentology*, *Journal of Sedimentary Petrology*, and *Geological Society of America Bulletin*, among others. As Technical Manager for Remote Sensing Incorporated in Houston, he shifted his focus from Gulf Coast geology to a global perspective and applied his expertise as a consultant to the United Nations Trans-Saharan Highway Project.

Then in 1971, Jerry accepted a position at the Bureau of Economic Geology, The University of Texas at Austin. From that time until his retirement in 1998, Jerry Wermund was a stalwart member of the Bureau staff, providing major contributions in research, administration, and publications. During his 27-year tenure, the Bureau of Economic Geology underwent phenomenal growth; full-time scientific staff increased more than seven-fold. With this growth in staff, the Bureau was forced to expand beyond its fifth-floor space in the Geology Building on U.T.'s main campus—first leasing off-campus space and ultimately moving into a new two-building complex at what is now called the J.J. Pickle Research Campus. At the time of this move, as Associate Director of the Bureau, Jerry undertook the unenviable task of coordinating the transfer from four widely separated sites to the new complex. The logistics could be compared to a military operation, and under Jerry's able direction the move went well. Today most of the Bureau's diverse staff works within easy walking distance of two buildings that comprise more than 220,000 ft² of floor space.

During many years of his work at the Bureau of Economic Geology, Jerry was a key member of W.L. Fisher's administrative team, serving as Associate Director alongside Charles G. (Chip) Groat, who is now the Director of the U.S. Geological Survey. Jerry also served as Director of the Bureau's Land Resources Laboratory. His administrative duties included working with the Bureau's strategic policy and planning issues and managing staff, while concurrently serving on numerous panels, commissions, and

working groups for The University of Texas, various state agencies of Texas, several programs of the U.S. Department of Interior, and numerous professional societies. Notable among his work with advisory panels were the years during which he shared his remote sensing and mapping expertise with the Texas Natural Resources Information System and the Texas Mapping Advisory Committee (TMAC). Upon retirement from the Bureau, Jerry received a resolution from TMAC in appreciation for his dedicated service.

But beyond his administrative duties, Jerry was always involved in a wide array of Bureau projects, ranging from environmental studies, to surface and subsurface geologic mapping, to assessment of petroleum resources—both onshore and offshore. Of significance among these projects was his supervision of one of the Bureau's first major contractual projects: a multi-year effort funded by the Texas Water Development Board that entailed mapping and analysis of hydrogeologic features and processes (on 7.5-minute base maps) within the watersheds of the Guadalupe, San Antonio, Nueces, and Lavaca Rivers—an area of more than 28,000 mi² (larger than the state of West Virginia!). This region includes the main recharge and discharge zones of the Edwards (artesian) aquifer along the Balcones Fault Zone, and farther downstream, the great outcropping reaches of the Carrizo-Wilcox Sand aquifers in South Texas.

Throughout this project, Jerry was continually employing the tools of remote sensing. Obviously, the use of stereoscopic aerial photographs was necessary for regional mapping of this scope, but he brought other media to bear as well—including early products from NASA's manned and unmanned spacecrafts. And those of us who were involved in this project will always remember our taking over the Texas Union Ballroom for several days during the summer of 1972, when we covered the floor with photo-mosaics scaled to fit standard 7.5-minute topographic quadrangle maps. Our geographic scope of study encompassed the three upper watersheds (Nueces, San Antonio, and Guadalupe)—upstream from the Balcones Escarpment and along the dissected edges of the Edwards Plateau—the loci of key hydrologic processes vital to sustaining the Edwards aquifer. Using tall stepladders and armed with laser pointers, researchers would spot linear trends across this "virtual landscape," while sock-clad coworkers would mark the end points with masking tape. It was a grand exercise in raw-data collection, but it was all in a day's work to Jerry Wermund, who dutifully compiled and analyzed the raw data and made sense of it all in terms of fracture porosity in the aquifer. Part of this work was published in the Bureau's Geologic Circular 78-2, "Regional distribution of fractures in the southern Edwards Plateau and their relationship to tec-

tonics and caves."

Over the years Jerry has served the Gulf Coast professional community through his work with the Austin Geological Society (having served as President and Vice President, as well as having chaired many committees). And Jerry's work with GCAGS has spanned more than two decades. He was General Chairman for the 1977 meeting of GCAGS—the first time the Annual Convention had been held in Austin. Marshaling a small but dedicated contingent of local geologists, Jerry was able to orchestrate an excellent meeting attended by more than 2,000 people. When the GCAGS came to Austin again in 1985, Jerry served as President of GCAGS—supposedly a ceremonial position. However, with the untimely departure of the presumed General Chairman, Jerry again filled the breach, and along with a new General Chairman (Ed Garner) brought to completion a successful meeting. For the 1994 Annual Convention in Austin, General Chairman Pete Rose named Jerry "Crisis Committee Chairman"—given his special expertise during those other years. Meanwhile, in 1993, GCAGS had already recognized Jerry's good work with its Distinguished Service Award.

Jerry has long been involved in "professional outreach"—efforts at getting geology into the hands of the public, especially elected officials and other decision-makers. He coordinated a major colloquium and workshop on environmental geology in 1974, and he edited the accompanying proceedings volume, *Approaches to Environmental Geology* (Bureau Report of Investigations No. 81). He also is the author of the succinct discussions accompanying the Bureau's page-sized maps: "River Basins of Texas" and "Physiography of Texas." This interest in outreach and communication with the general public abides with Jerry even into his retirement. At present, he is finalizing a geologic guidebook to Pedernales Falls State Park. And he spends part of his time now as a volunteer docent at the Austin Children's Museum. Meanwhile, he is avidly pursuing a second career—as a writer. Much of his writing effort is aimed at explaining geology and earth resources to youthful audiences.

In summary, the GCAGS Directors have chosen for Honorary Membership, Jerry Wermund—a man of intellect, integrity, and scientific acumen. But most importantly, they have selected for this honor a man with a *big heart!* It is an honor greatly deserved.

C.M. Woodruff, Jr.

Honorary Membership

Gulf Coast Association of Geological Societies

Robert Arthur Anderson

It is extremely fitting that the GCAGS award Honorary Membership to Robert A. Anderson, a very successful independent geologist who has dedicated much of his career to the service of various geological, educational and charitable organizations.

Bob Anderson was born in the small town of Franklin, Louisiana and spent the early years of his life in various communities along the Gulf Coast where his father was engaged in the petroleum industry. His proximity to oil field operations and association with geologists and engineers during this early phase of his life stimulated an interest in the geological profession that continues to this day. He prepared for his career as a petroleum geologist through his studies at the Southwestern Louisiana Institute (now University of Southwestern Louisiana) where he earned a B.S. in Geology in 1952. Following two years of service in the U. S. Air Force, Bob undertook post-graduate studies at Louisiana State University.

He began his career as a geologist with Shell Oil in 1956 where he really learned the art of exploration techniques while in Shell's Baton Rouge office. In 1959 Shell opened an exploration office in Lafayette and, heeding the advice to "Go West, young man", Bob moved his family there. Concurrent with his employment, in 1963 Bob responded, out of curiosity, to a Lafayette newspaper advertisement and won a USL contract for vending operations on the school campus. This investment became significant to his long-term career plans when, in 1966, Shell closed its Lafayette office and moved the staff to New Orleans. Not relishing the idea of big-city life Bob resigned from Shell. His vending business provided the revenue that enabled him to pursue the opportunities then available to an independent geologist.

This was a timely decision, given the status of the industry at that moment, and in 1968 Bob formed the Andex Corporation, a family owned business active in exploration of oil and gas reserves. During the years since that time Bob has had much success, finding significant production in such areas as Deep Lake, Pecan Lake, Chalkley and others. He continues an active roll in its operations today.

Bob has supported the Lafayette Geological Society (LGS) in many different capacities, serving as an officer on the Board of



Directors, chairing numerous committees, contributing to and editing LGS transactions of *Typical Oil and Gas Fields of Southwestern Louisiana* (Vol. I, 1964; Vol. III, 1989), and in 1982 he was awarded an Honorary Membership by the society. He considers his most significant contribution to LGS to be the establishment of the chapter scholarship programs, particularly the scholarship which recognizes the late William "Bill" Paine, a professor of geology at USL. For a number of years Bob has been the mentor of many students by teaching the subsurface geology project at USL. He has also been active with GCAGS during its previous conventions in Lafayette: in 1974 Bob served as Awards Chairman; in 1980 as Treasurer; and in 1990 he was in charge of all alumni functions. As an independent, Bob became an early member of SIPES (No. 336). During the years 1974 - 77 he served on the Lafayette Chapter Board, becoming Chairman in 1976-77. In the early 1980s he extended his dedication to SIPES by representing the Lafayette Chapter on the National Board, including two years as Vice-President.

Bob is married to the former Betsy Crawford and is the proud father of four wonderful children. One daughter and one son have followed his footsteps into the field of geology.

He shares his spare moments by continually supporting his most satisfying and successful achievement, the Episcopal School of Acadiana, an outstanding college preparatory high school he helped found in the community in 1979. Bob has also worked for almost 30 years to better the lives of the less-fortunate citizens in the Lafayette area by serving on the Advisory Board of the Salvation Army. During this time he has been chairman of the Board as well as various committees.

Bob Anderson is immensely qualified to join the distinguished group of GCAGS Honorary Members and to be presented his award in the city to which he has contributed so much for so long.

Peter G. Gray

Honorary Membership

Gulf Coast Section SEPM

John M. Armentrout

John M. Armentrout was born December 21, 1942, in Portland, Oregon where he grew up. He received his B.S. in Biology (1964) and Geology (1965) and his M.S. in Geology from the University of Oregon. John's career as a teacher began in 1967 at the junior high school level where he taught Biology (and served as coach for the girls track team). During this time, he also served as Director of Outdoor Education at the Oregon Museum of Science and Industry where he initiated summer programs for teenagers in Vertebrate Paleontology and Archaeology.

In 1970, John returned to school at the University of Washington, specializing in molluscan paleontology (not many sequence stratigraphers can make this claim) and was awarded his Ph.D. in 1973. During this time he worked as an assistant curator at the Burke Memorial Museum at the University of Washington and took a one-year position at the University of Oregon when his funds ran out.

John joined Mobil in 1973, starting in Denver with the Alaskan Division. His career at Mobil has taken him into the field in such places as Alaska, Norway, Trinidad, Venezuela, China, and Vietnam. John also has been influential in the development of Mobil's training program in Sequence Stratigraphy, and he has taught workshops for Mobil's affiliates in Nigeria, Australia, England, Scotland, Austria, as well as the United States. John worked for Mobil in World Wide Basin Analysis, as Lead Geologist on Mobil's Deep Water Siliclastic Task Force, and served in their New Exploration Venture Group.

John has published more than forty six technical papers, edited six volumes, written three field guide books, authored more than one hundred ten abstracts. He has served as an AAPG Co-Editor. John's ability as a presenter are well documented with more than seven best paper and best poster awards. Best of all, just note the turnout for a John Armentrout presentation--get there early or you will not find a seat!

Despite all of the above, John has made the time to serve his profession. John has been an SEPM member since 1965 and a member of the Gulf Coast Section of SEPM since 1987. John has served as the Program Chair and Co-Editor for the GCSSEPM Foundation Annual Research Conferences in 1990 (on Sequence



Stratigraphy) and 1993 (on Rates of Geologic Processes), and was GCSSEPM President in 1993. It should be noted that John's 1990 conference on Sequence Stratigraphy was held an unprecedented second time due to popular demand in the summer of 1991. It was during his presidential tenure that the Gulf Coast Taxonomic Equivalency project was formally initiated.

John also has a distinguished record with the national SEPM. He has served as SEPM Vice-Chair for the 1991 annual meeting, as Technical Program Chair for the 1993 annual meeting, as Secretary-Treasurer for 1984-86, and as President for 1996-97. In addition, John has organized technical symposia, chaired two Executive Director search committees, and is actively involved with the SEPM Foundation.

If that is not enough activity, John also has served as president of the Denver Geological Society and has served on the AAPG Grants-in-Aid Committee.

John's greatest technical joy comes from reading the story rocks have to tell and sharing that story with enthusiastic students of the Earth. Mobil, SEPM and the GCSSEPM have fostered that love through 25 years of global exploration and professional interaction.

John has kept a sense of proportion and meaning in his personal life. He has served as a scout leader for nine years and as a Church Elder for five years. His wife of thirty four years, Kae, is a special education teacher (which explains how she has survived with John). Their two sons, their wives, and four grandchildren have made the family all the more joyous.

While the above summary tells you about some of John Armentrout's accomplishments and why he has been selected for honorary membership, words alone can not describe the energy and enthusiasm he brings to a project, nor the fact that he is a genuinely nice person. It is with pleasure that I write this note. He is truly worthy of Honorary Membership in the Gulf Coast Section of SEPM.

Rashel N. Rosen

Past Recipients

Honorary Memberships

Gulf Coast Association of Geological Societies

D. R. Boyd (1982)	T. H. Philpott (1990)
J. Braunstein (1982)	none awarded (1991)
M. T. Halbouty (1982)	none awarded (1992)
F. W. Harrison, Jr. (1982)	G. A. Cooley (1993)
H. N. Hickey (1982)	M. G. Frey (1993)
L. H. Meltzer (1982)	P. G. Gray (1993)
S. J. Lysinger (1983)	J. T. Palmer (1993)
J. O. Lewis (1983)	T. D. Barber (1994)
E. C. Roy, Jr. (1983)	D. F. Tobin (1994)
F. L. Smith, Jr. (1983)	Edward B. Picou, Jr. (1995)
P. M. Strunk (1983)	George D. Severson (1996)
R. J. LeBlanc, Sr. (1984)	Arnold H. Bouma (1997)
W. R. Paine (1984)	Carlo C. Christina (1997)
M. O. Turner (1984)	David Pope (1997)
W. L. Fisher (1986)	Dan Smith (1997)
C. L. Sartor (1986)	Stewart Chuber (1998)
J. J. Amoruso (1987)	John C. Langford (1998)
W. L. Stapp (1988)	Raymond W. Stephens (1998)
J. A. Gilreath (1989)	James Lee Wilson (1998)
R. E. Boyer (1990)	E. G. Wermund, Jr. (1999)
J. A. Hartman (1990)	Robert A. Anderson (1999)

Past Recipients Honorary Memberships

Gulf Coast Section SEPM

Ester Applin (1964)
Alva C. Ellisor (1964)
Marcus A. Hanna (1964)
Henry V. Howe (1964)
Hedwig T. Kniker (1964)
Winnie McGamery (1964)
John R. Sandidge (1964)
J. B. Garrett, Jr. (1965)
E. H. Rainwater (1966)
Henry B. Stenzel (1971)
Jules Braunstein (1973)
Grover E. Murray (1973)
Harold V. Anderson (1975)
Lyman D. Toulmin (1975)
Doris M. Curtis (1977)
Stuart A. Levinson (1978)
Fred L. Smith, Jr. (1978)
Charles W. Stuckey (1978)

William R. Paine (1980)
Frank E. Lozo, Jr. (1981)
Claude M. Quigley, Jr. (1986)
William P. S. Ventress (1986)
Don G. Bebout (1987)
David E. Pope (1987)
Emmett Ray Adams (1989)
Jack O. Colle (1989)
John B. Dunlap (1989)
C. Clarence Albers (1990)
Ben J. Petrussek (1990)
Ernest A. Mancini (1991)
James M. Coleman (1992)
Edward McFarlan, Jr. (1994)
Arnold H. Bouma (1995)
Harry H. Roberts (1996)
Joel S. Watkins (1998)
John M. Armentrout (1999)

Past Recipient Distinguished Honorary Membership

Gulf Coast Section SEPM

Charles G. Ventress (1989)

Outstanding Educator Award

Gulf Coast Association of Geological Societies

Maurice Gordon Frey

Maurice Gordon Frey was born in Cincinnati, Ohio, in 1913. He attended the University of Cincinnati in the heart of the Depression, receiving a B.S. in geological engineering in 1936. While at Cincinnati, Gordon was influenced by such notable geologists as John L. Rich, Walter H. Bucher, and N.M. Fenneman. With the urging of Professor A.E. Sandberg, his mineralogy professor at U.C., Gordon applied for and was given a graduate assistantship at the University of Minnesota where he received his M.S. in geology in 1937 and his Ph.D. in 1939. He has been married fifty-five years to Marjorie Wells Frey.

Gordon began his professional career in 1939 as a geologist-geophysicist with the Standard Oil Company of California. In the fall of that year he was sent by the company to the Saudi Arabia petroleum province. This work was cut short by the growing unrest of what was to become World War II.

Enticed by his former mentor, J.L. Rich, Gordon left industry in 1948 for a teaching position at the University of Cincinnati, where he immediately advanced to Associate Professor. When Rich became ill in 1951, he asked Gordon to serve as Department Head. Gordon acted in this capacity through the 1952 academic year, at which time he succumbed to entreaties by the California Company to return to the industry.

In his second employment period with the California Company (later Chevron), Gordon served in many capacities, including District Geologist, Supervisor of Geophysics, Chief Geologist, Assistant to the Vice President and General Manager for Exploration, and Consulting Geologist for Environmental Affairs.



Gordon retired from Chevron in 1978 after thirty-six years of service and took an appointment as Adjunct Professor of Geology at the University of New Orleans. During his fifteen year at UNO, Gordon influenced the careers of hundreds of students through his wise council, classroom instruction, and direction of theses. In 1991, he was appointed as the first recipient of the Braunstein Professorship of Subsurface Geology.

Gordon is an Honorary Life Member of the New Orleans Geological Society, which he has served in many capacities, including President in 1969-70. He is a charter member of the Southeastern Geophysical Society and Emeritus Member of the AAPG. In 1978, the GCAGS dedicated its Transactions volume to him and in 1993 he was selected as an Honorary Member of the Society. Gordon served as Chairman of the AAPG Annual Meeting in New Orleans in 1976 and was awarded the Association's Human Needs Award in 1979.

Doc Frey, as he affectionately known among his colleagues and students, has given over 60 years of dedicated service to our profession. Gordon retired from the University of New Orleans in 1993, but maintains close ties with the Department of Geology and Geophysics, as demonstrated by his acceptance of the chairmanship of a M.S. thesis committee last year. The receipt of the Outstanding Educator Award is a fitting tribute to his long career in the blending of education and industry.

W.W. Craig

Outstanding Educator Award

Gulf Coast Association of Geological Societies

Nolan G. Shaw

It is altogether fitting that Nolan receives the Outstanding Educator Award from the GCAGS. His long-term commitment to the field of geological education and the skill and dedication which have continued to inspire and influence so many of his students and colleagues support this recognition. His contagious enthusiasm for learning and understanding as displayed in his technique style and his participation in professional and civic organizations easily allow one to understand why he should be so honored.

When informed of this award, Nolan remarked that he was deeply indebted to so many people who shaped and directed his life. He was reminded of John Donne's (1572-1631) famous lines, "No man is an island, entire of itself; every man is a piece of the continent, a part of the main..." He recognizes the contributions by so many individuals to his academic and professional achievements, who served as "pieces of the continent" as they added "grain by grain" the essentials of a superb education in geology.

If an educator is judged by the success of his students, Nolan is successful. He respected and enjoyed his students and they reciprocated this relationship as they learned and developed intellectually. His field trips were numerous and legend, always learning experiences.

Nolan was born in western Texas, near Big Spring, on October 2, 1929 and lived in various communities where quality education was appreciated and demanded. He received his B.A. degree in geology from Baylor University, the M.S. degree in geology from Southern Methodist University and the Ph.D. in geology from Louisiana State University. At Baylor, he was initiated into the world of teaching by being appointed a lab assistant for physical and historical geology courses. He earned an R.O.T.C. commission as a second lieutenant in the U.S.A.F. and served two years in administrative positions at Lackland A.F.B., San Antonio, Texas, attaining the rank of Captain during his tenure with the Air Force.

After leaving the Air Force, Nolan went to Southern Methodist University as an Assistantship in Geology, teaching the basic laboratories in geology. His thesis was on a quadrangle near Benbrook, Texas where Lower Cretaceous strata crop out. A part of the thesis concerning large ripple marks on the Walnut Limestone was published in a Shreveport Geological Society guidebook in 1969.

His full-time teaching career began in 1955 at Centenary College of Louisiana where he was an Instructor in Geology. In 1959, he took a two-year leave of absence to attend Louisiana State University to commence study for the terminal degree. While at L.S.U. he was awarded the Pan American Fellowship in Geology and membership in Phi Kappa Phi and the L.S.U. chapter of Sigma Xi. During the second year he served as Instructor of Geology. His dissertation, "Cheilostomata from Gullfin (Upper Cretaceous)



Rocks of Southwestern Arkansas," was published in the *Journal of Paleontology* (vol. 41, no. 6) naming several new genera and species. In honoring Nolan for his contribution, Gilbert Larwood of the British Museum of Natural History named a new species from the Upper Cretaceous strata of Arkansas, *Pyripora shawi*. After going back to Centenary College of Louisiana, Nolan became Professor and Chairman of the Geology Department. Later, he was awarded the position of William C. Woolf Professor of Geology, a position he held until retirement, and subsequently named Professor Emeritus of Geology. During his thirty years at Centenary, Nolan was recognized as Outstanding Teacher of the Year, awarded several research grants and elected by his peers to various committees, including the Faculty Personnel Committee.

Through the years, Nolan has been member and participated in various professional societies. He is a Fellow of the Geological Society of America, Certified

Petroleum Geologist in the American Association of Petroleum Geologists and the Society of Independent Earth Scientists. Other memberships include the SEPM (Society for Sedimentary Geology) and the Shreveport Geological Society. As a member of the Shreveport Geological Society, he has served as President, Vice President, Program Chairman, and as Chairman of the Field Trip Committee. As a member of the Society of Independent Professional Earth Scientists he has served as a board member and President of the Ark-La-Tex Chapter and as General Chairman and Program Chairman for the national annual meeting held in Shreveport in 1989. He served as Editor of the Transactions for the Twentieth Annual Meeting of the Gulf Coast Association of Geological Societies held in Shreveport in 1970 and as Program Chairman for the GCSSEPM for the GCAGS/GCSSEPM Twenty-Sixth Annual Convention held in Shreveport in 1976. He also served as Program Chairman for both the GCAGS and the GCSSEPM at the Thirty-Fourth Annual Convention held in Shreveport in 1984 and as Program Chairman for the GCSSEPM at the Forty-Third Annual Convention held in Shreveport in 1993. He received the Distinguished Service Award by the GCSSEPM in 1994 in Austin, Texas.

Since retirement, Nolan has been "practicing what he preached," associated with Shaw-Laird, LLC and successfully exploring for hydrocarbons in northern Louisiana.

Nolan is married to Jane Craig Shaw, who has a degree in geology. They have five children and five grandchildren. Nolan, Jr. and a son-in-law, Colin Kimball, are also geologists.

This award is a proper and fitting tribute to Nolan.

Joseph O. Laird

Past Recipients

Outstanding Educator Award

Gulf Coast Association of Geological Societies

Robert R. "Bob" Berg (1991)

James M. Coleman (1991)

Brian E. Lock (1991)

Edward E. Roy, Jr. (1991)

Arnold H. Bouma (1992)

Clyde H. Moore (1992)

Carl E. Norman (1992)

Alfred E. Weidie, Jr. (1992)

William E. Galloway (1993)

William W. Craig (1994)

Harry H. Roberts (1995)

William R. Bryant (1996)

Jeffrey S. Hanor (1997)

Donald H. Kupfer (1997)

William C. Ward (1997)

Ernest A. Mancini (1998)

M. Gordon Frey (1999)

Nolan G. Shaw (1999)

1999 A.I. Levorsen Memorial Award

Tom E. Ewing

Dr. Thomas Ewing received a B.A. in Geology from the Colorado College in 1975, an M.S. in Geochemistry from New Mexico Institute of Mining and Technology in 1977, and a Ph.D. in Geological Sciences from the University of British Columbia in 1981.

Dr. Ewing was a research geologist for over four years at the Texas Bureau of Economic Geology. While there he was in charge of geologic analysis of Gulf Coast geopressured reservoirs and geothermal resources, served as a co-author of the "Atlas of Texas Oil Reservoirs", and served as compiler of the Tectonic Map of Texas. Since 1985 he has been co-owner with Linda Ewing of Frontera Exploration Consultants, Inc., a San Antonio-based geology and geophysics consulting company. He has worked with Venus Exploration, Inc. since 1985 for its ongoing and successful exploration efforts in the Yegua Trend of the Gulf Coast Basin, West Texas and Kansas, and has been on staff there since 1995. He also serves as an Adjunct Professor at UT-San Antonio.

Dr. Ewing is a member of various regional and national professional societies. He is Certified Petroleum Geologist #4538, served as Treasurer of the AAPG Division of Professional Affairs in 1993-1995, and as its Vice-President in 1997-1998. He has been



an AAPG Delegate from the Austin and the South Texas Geological Societies, and served as Vice-Chairman of the AAPG House of Delegates in 1992-1993. He has been elected President of the Energy Minerals Division of the AAPG, serving in 1999-2000.

Dr. Ewing chaired the Edwards Aquifer Committee of the South Texas Geological Society in 1988-90, which issued a call for geologic and technology-based aquifer management. He served as President of the South Texas Geological Society in 1990-1991, and as General Chairman of the 1996 GCAGS Convention in San Antonio, and Vice-Chairman for EMD Events at the 1999 AAPG Annual Convention in San Antonio.

Tom has spoken extensively at local, regional, and national geological meetings and has authored or co-authored over 70 published papers and abstracts. Among other awards, he is a previous recipient of the Gulf Coast Section AAPG Levorsen

award, given to him and Chris Caran in 1982. He has also received the GCAGS Distinguished Service Award in 1993.

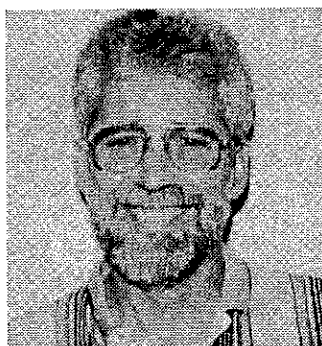
1998 Excellence of Presentation Award

Gulf Coast Association of Geological Societies

First Place Excellence of Presentation Award

Gary Kinsland

**For: Vermillion River Flood Gates:
To Mitigate Lafayette, Louisiana Flooding**



Gary L. Kinsland is the Pioneer Production Professor of Geology at the University of Southwestern Louisiana. He received his B.S. in Physics (1969) and his M.S. (1971) and Ph.D. (1974) in Geology from the University of Rochester. He was a Post-Doc at the University of Rochester until 1976 when he took a one year Visiting Assistant Professorship at Arizona State University. He has been at the University of Southwestern Louisiana since 1977 and is now a Full Professor of Geology and an Adjunct Professor of Physics. His research interests and efforts have been mostly in broadly based geophysics. He has collected, processed, interpreted and published gravity surveys, magnetic surveys and seismic surveys (both 2-D and 3-D). Presently, he is heavily involved in time lapse 3-D studies, field geophysical studies over the Chicxulub Impact crater and runoff/flooding mitigation studies for the city/parish of Lafayette Louisiana. He lives in the country between Lafayette and Sunset with his wife, Kellie, and their 7 month old daughter, Mikaila. His other child, Cynthia, is completing her Ph.D. in chemistry at Cornell.

Second Place Excellence of Presentation Award

Tom Ewing

**For: Shangha Field, Expanded Upper Yegua Trend, Texas Gulf Coast:
Unexpected Reserves Defined By 3-D Seismic**



Thomas Ewing received a B.A. in Geology from the Colorado College in 1975, an M.S. in Geochemistry from New Mexico Institute of Mining and Technology in 1977, and a Ph.D. in Geological Sciences from the University of British Columbia in 1981.

Dr. Ewing was a research geologist for over four years at the Texas Bureau of Economic Geology. While there he was in charge of geologic analysis of Gulf Coast geopressedured reservoirs and geothermal resources, served as a co-author of the "Atlas of Texas Oil Reservoirs", and served as compiler of the Tectonic Map of Texas. Since 1985 he has been co-owner with Linda Ewing of Frontera Exploration Consultants, Inc., a San Antonio-based geology and geophysics consulting company. He has worked with Venus Exploration, Inc. since 1985 for its ongoing and successful exploration efforts in the Yegua Trend of the Gulf Coast Basin, West Texas and Kansas, and has been on staff there since 1995. He also serves as an Adjunct Professor at UT-San Antonio.

Dr. Ewing is a member of various regional and national professional societies. He is Certified Petroleum Geologist #4538, served as Treasurer of the AAPG Division of Professional Affairs in 1993-1995, and as its Vice-President in 1997-1998. He has been an AAPG Delegate from the Austin and the South Texas Geological Societies, and served as Vice-Chairman of the AAPG House of Delegates in 1992-1993. He has been elected President of the Energy Minerals Division of the AAPG, serving in 1999-2000.

Dr. Ewing chaired the Edwards Aquifer Committee of the South Texas Geological Society in 1988-90, which issued a call for geologic and technology-based aquifer management. He served as President of the South Texas Geological Society in 1990-1991, and as General Chairman of the 1996 GCAGS Convention in San Antonio, and Vice-Chairman for EMD Events at the 1999 AAPG Annual Convention in San Antonio.

Tom has spoken extensively at local, regional, and national geological meetings and has authored or co-authored over 70 published papers and abstracts. Among other awards, he is a previous recipient of the Gulf Coast Section AAPG Levorsen award, given to him and Chris Caran in 1982. He has also received the GCAGS Distinguished Service Award in 1993.

Third Place Excellence of Presentation Award

Chip Story

**For: Norphlet Geology and 3-D Geophysics of Fairway Field,
Mobile Bay Alabama**



Chip Story hold a B.S. degree in Geological Engineering from the South Dakota School of Mines and a M.S. degree in Geophysics from the Colorado School of Mines. His career began with Amoco in 1977 with the early efforts in the Wyoming Thrust Belt. Subsequent projects included work in the Paradox Basin and Williston Basin. Project assignments starting in 1983 involved the Gulf of Mexico, and the Santos Basin offshore Brazil. Chip is currently assigned to the International Energy Organization in BP Amoco's Houston office where he is working the Liuhua Field in the South China Sea. His professional interests involve 3-D seismic interpretation, visualization, and reservoir characterization technology. Chip holds active membership in the Geophysical Society of Houston and the Society of Exploration Geophysicists.

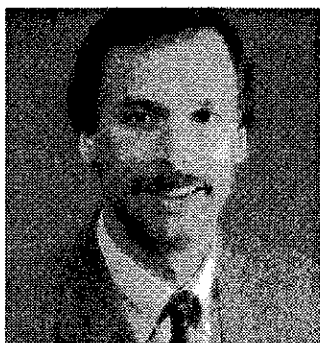
1998 Best Poster Awards

Gulf Coast Association of Geological Societies

First Place Best Poster Award:

Tucker F. Hentz, Barbara J. Bascle, Leslie Nixon,
Robert H. Peterson, and Chacko John

**For: Newly Defined Plio-Pleistocene Plays, Northern Gulf of Mexico:
Field Characteristics and Production Statistics**



Tucker F. Hentz is a Research Associate with the Bureau of Economic Geology, The University of Texas at Austin, which he joined in 1982. He graduated cum laude with a B.A. degree in Geology from Franklin & Marshall College in 1977 and received his M.S. degree in Geology from The University of Kansas in 1982. He initially worked for a short period for Exxon Company, U.S.A., in their New Orleans exploration office before joining the Bureau of Economic Geology, where he has worked on numerous research projects involving a variety of geologic topics. He has studied the depositional systems of Pennsylvanian and Permian sequences of the Eastern Shelf of North-Central Texas, native sulfur deposits in Trans-Pecos Texas, the petrology and diagenesis of Gulf Coast and Val Verde Basin sandstones, and the regional sequence stratigraphy and structure of gas-bearing successions in the Anadarko Basin, Rio Grande Embayment, and Gulf Coast Basin. Moreover, he was Technical Editor of Bureau publications for 12 years. Tucker is co-editor of Volume 1 and lead editor and co-author of Volume 2 of the Bureau's 1997 two-volume publication, *Atlas of Northern Gulf of Mexico Gas and Oil Reservoirs*. The poster-award presentation was based on some of the data and analysis from this work. He is also co-editor and co-author of two other hydrocarbon atlases produced by the Bureau. He is currently a team leader engaged in reservoir characterization in mature gas fields in offshore Louisiana. Tucker is the author and co-author of many contract reports, numerous abstracts, and more than 25 peer-reviewed, published articles.



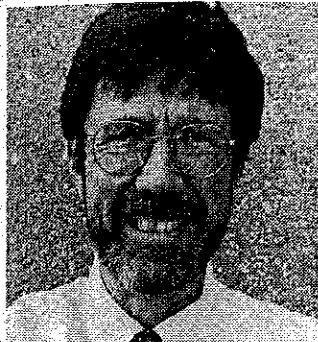
Barbara J. Bascle is a geologist with the U.S. Department of the Interior Minerals Management Service (MMS), Gulf of Mexico OCS Regional Office.

Mrs. Bascle holds a BA degree in Geology from the University of Wisconsin and an MS degree in Geology from the University of South Carolina. She has been employed with the MMS for the last 17 years where she has worked several offshore areas, including the Beaufort Sea, Cook Inlet, and Navarin Basin while stationed in Anchorage and, currently, the Gulf of Mexico. Since 1993, Mrs. Bascle has worked mainly deepwater areas of the Gulf for regional studies and lease sales evaluations, and has been involved in the publication of the "Atlas of Northern Gulf of Mexico Gas and Oil Reservoirs" and the assessment of hydrocarbon resources in the Gulf of Mexico and Atlantic. She is currently a supervisor in the Reserves Section.



Leslie Nixon received B.S. degree (1987) in geology from Eastern Illinois University has her M.S. degree (1992) in geophysics from Arizona State University. She has worked in the petroleum industry as a geologist in the Illinois Basin for a petroleum consulting company and as an exploration geophysicist in the Gulf of Mexico for Shell Offshore Inc. She now works for the U.S. Department of the Interior Minerals Management Service, Gulf of Mexico OCS Regional Office, as a geophysicist. Her most recent areas of responsibility include the publications of the Northern Gulf of Mexico Gas and Oil Reservoirs Atlas series and the National Assessment of hydrocarbon resources in the Gulf of Mexico and Atlantic Basins.

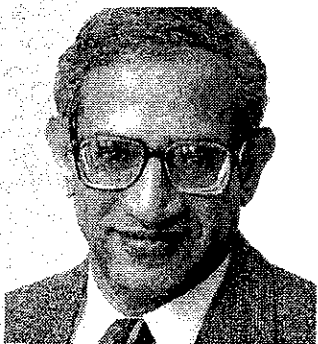
First Place Best Poster Award *continued*



Robert H. Peterson is a geologist with the U.S. Department of the Interior Minerals Management Service Gulf of Mexico OCS Regional Office.

Mr. Peterson hold a BA degree in Geology from Wittenberg University and an MS degree in Geology from the University of Arizona. After his graduation in 1979 he spent 12 years in exploring for oil and gas in the Gulf Coast Basin with Shell Oil Company. Since 1988 Mr. Peterson has worked in the deep-water areas of the Gulf of Mexico, first in prospect exploration and lease acquisition, and now with the MMS, in establishing oil and gas field reserves.

He holds professional memberships in the New Orleans Geological Society and the American Association of Petroleum Geologists.



Chacko John is Director and State Geologist of the Louisiana Geological Survey (LGS), Louisiana State University (LSU), Baton Rouge, Louisiana. He has been at LSU for the last 12 years where he has worked in various positions including Director of Research of LGS, and Director of the Basin Research Institute which is now part of LGS. Previously he worked with Marathon Oil Company at Lafayette and Houston (1980-1986). He holds M.S. and Ph.D. degrees in geology from the University of Delaware, Newark, Del., and B. Sc. And Msc. degrees (geology) from the University of Nagpur, India. He is an AAPG certified Petroleum Geologists, holds AIPG certification, and is a registered geologist in South Carolina. He was editor of the 1995 GCAGS Transaction volume and is the author or co-author of numerous technical papers and reports. He is a member of AAPG, AASG, GSA, AIPG, SEPM and several other professional societies.

Second Place Best Poster Award:

Joseph C. Fiduk, Paul Weimer, Bruce D. Trudgill,
Mark G. Rowen and Barry McBride

For: Thermal Maturation Modeling of Potential Source Rocks Within the Perdido Fold Belt (Alaminos Canyon), Northwestern Deep Gulf of Mexico



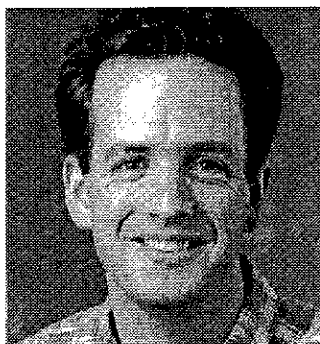
Joseph Carl Fiduk received his bachelor ('79) and master's ('82) degree in geology from the University of Florida in Gainesville. He was hired out of school by Gulf Oil as a geophysicist during the boom and spent four years in Midland, Texas exploring the Permian Basin for oil and gas. During the same time, he went to night school and received an M.B.A. from the University of Texas in the Permian Basin in December of 1985. In August of 1986 he moved to Austin, Texas and started a Ph D. research program at the University to Texas in Austin. His research topic was the "Plio-Pleistocene evolution of the upper continental slope in the Garden Banks and East Breaks areas". While working on his degree, he also worked at the Texas Bureau of Economic Geology. Carl finished his Ph D. research in May of 1994. In August of 1994 he moved to Boulder, Colorado to take a position as a Research Associate in the Department of Geological Sciences at the University of Colorado. Within the Energy and Minerals Applied Research Center (EMARC) group, he spent the next two and a half years researching structural, depositional, and sequence stratigraphic problems in the Perdido fold belt. During the past two years, he has been modeling the thermal maturation of potential source rocks in the Perdido fold belt area and working as a geological consultant.

His general research interests lie in the areas of sedimentology, salt tectonics, basin analysis, petroleum systems analysis, and deep marine depositional processes. Presently, Carl is an independent geological consultant in Boulder, Colorado. He is a member of the HGS, GCSSEPM and AAPG and is an AAPG certified petroleum geologist.

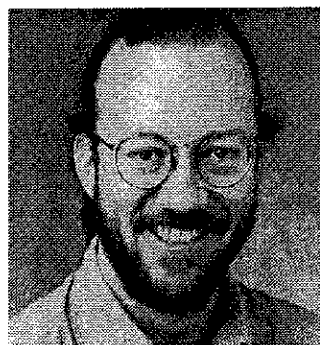
Second Place Best Poster Award *continued*



Paul Weimer holds the Bruce D. Benson Endowed Chair for Petroleum Geology at the University of Colorado-Boulder, and serves as the Director for the Energy and Minerals Applied Research Center. His primary research interest is the petroleum systems of the northern Gulf of Mexico.



Dr. Bruce Trudgill graduated with a first class honours degree (B.Sc.) in Geology from the University of Wales at Aberystwyth and a Ph.D. in structural geology from Imperial College. His Ph.D. thesis topic was "Field and Seismic Analysis of the Structural Inversion of Sedimentary Basins", based on field studies in the western French Alps, and seismic interpretation in the Celtic Sea basins, west of Britain. After leaving Imperial College, Bruce worked at Amerada Hess UK Ltd. as an exploration geologist before returning to Imperial College as a Research Fellow to investigate fault linkage geometries in the Canyonlands Grabens of SE Utah. In 1994, Bruce moved to the Department of Geological Sciences at the University of Colorado. At CU, Bruce is an Assistant Research Professor, and part of the EMARC research group. He is currently studying the evolution of salt, faults and minibasins in the northern Gulf of Mexico, using 3-D seismic interpretation and structural restorations in both two and three dimensions. Bruce maintains an active interest in field based geology, and spends as much time in SE Utah as possible, looking at "real rocks". He is an active member of AAPG and a Fellow of the Geological Society of London.



Mark Rowan received a B.S. in biology from CalTech in 1976, an M.S. in stratigraphy and tectonics from Berkeley in 1982, and a Ph.D. in structure from the University of Colorado at Boulder in 1991. He spent 3 years at Sohio Petroleum Co. in Denver from 1982 to 1985, then joined Geo-Logic Systems in Boulder, where he consulted for the industry and was involved with the development of cross-section restoration software (Geosec). In 1989, Mark joined Alastair Beach Associates in Glasgow, Scotland, as a consultant in structural geology, working primarily on the North Sea and offshore Norway, but including projects from throughout the world. In 1992, he returned to the University of Colorado as a Research Associate and then Research Assistant Professor in the Energy and Minerals Applied Research Center (EMARC), where he headed up a large industrial research consortium investigating Gulf of Mexico salt tectonics. Mark recently left this position and is now an independent consultant for the petroleum industry, providing structural expertise and teaching courses in structural geology, with an emphasis on salt tectonics. He is author or coauthor of over 40 papers and 75 abstracts.



Barry McBride is an exploration geologist with HS Resources Inc. in Denver, Colorado, and works the Northern Rocky Mountain region. He received his B.S. degree in Geology from Furman University in 1985, his M.S. degree in Geology from Western Michigan University in 1988, and his Ph.D. in Geology from the University of Colorado in 1997. Employed as an exploration geologist by Mobil Exploration and Producing U.S. Inc. he worked the thrust belt, the North Slope of Alaska, and onshore Germany before joining the Global Geology Team. In 1992 he was awarded the American Association of Petroleum Geologists Student Chapter's Best Paper Award. From 1996 to 1997, he was employed as senior geologist by CogniSeis Development Inc. working on geological and geophysical software for the oil and gas industry. His interest focus on petroleum exploration, complex structures, and petroleum systems.

Dr. McBride is a member of the American Association of Petroleum Geologists, Rocky Mountain Association of Geologists, Wyoming Geological Association, and the Montana Geological Society.

Third Place Best Poster Award:

R.R. Pressler and D. B. Walker

For: Deepwater Gulf of Mexico - Recent Advancements in Deepwater Seafloor Imaging: Integrating Deep Toe, Submersible, and Conventional 3-D Seismic to Evaluate the Garden Banks Block 260 Baldpate Development



Ron R. Pressler received his Bachelor of Science in Geology from the University of Texas at Austin in 1976 and conducted post graduate work at the University of Houston. During the past 21+ years he has worked in various Exploration and Production capacities in a number of domestic petroleum basins. He has worked Onshore / Offshore Gulf of Mexico and East Texas for both Ashland Oil (1974-1979) and Union Texas Petroleum (1979-1985). He Joined Amerada Hess in 1985 working in both Exploration and Development capacities. His most recent assignment was Manager of Gulf of Mexico Exploitation and Development prior to joining the newly created Deepwater Production Unit in 1996 as Division Geoscientist. His duties have included the direction and integration of the geological and geophysical efforts on the multiple developing Deepwater and Subsalt ventures which include AHC's operated Baldpate/ Conger/ Penn State (GB260/215/216) as well as the Shell operated Enchilada/ Salsa/ Chimichanga projects (GB 128/172/127).



D. Bret Walker received his Bachelor of Science degree in Physics from Southwestern Oklahoma State University in 1981. Upon graduation he joined Gulf Oil, where he worked regional exploration in the Michigan and Illinois Basins, and the Texas Gulf Coast. In 1985 he joined Amoco Production Company, where he was responsible for HCI/AVO analysis for the Offshore Louisiana Technical Group, performed various field studies in the Offshore Louisiana Exploitation Group, and in 1989 was transferred to the Africa and Middle East Region. He joined Amerada Hess in 1990, where he interpreted various projects in the Offshore Gulf of Mexico Exploitation and Development Group. Bret is the geophysicist assigned to the Amerada Hess Deepwater Production Unit, which is responsible for development of all Deepwater Gulf of Mexico production and development projects. His recent projects include responsibility for geophysical interpretation and evaluation of AHC's operated Baldpate/ Conger/ Penn State (GB 260/215/216) developments, as well as the Shell operated Enchilada/ Salsa/ Chimichanga projects (GB 128/172/127).

Past Recipients Best Paper Awards and A.I. Levorsen Memorial Awards

Gulf Coast Association of Geological Societies

	First Award	Second Award	Third Award	A. I. Levorsen Award*
1959	J. E. Walters	R. L. Oakes	H. A. Bernard C. F. Major, Jr. B. S. Parrott	
1960	D. J. Hughes†	D. I. Andrews†	E. H. Rainwater†	
1961	R. D. Ocamb	D. I. Andrews J. C. Stipe	R. P. Fietz K. R. Scott W. E. Hayes	
1962	D. R. Tucker	R. J. Granberry R. C. Wilshusen	G. C. Glaser (tie)‡ W. R. Walton (tie)‡	
1963	E. H. Rainwater	V. Peppard	S. L. Blanton, Jr.	
1964	E. H. Rainwater	D. R. Boyd B. F. Dyer	J. L. Arps	
1965	C. R. Kolb J. R. van Lopik	G. R. Kellough	Not awarded	
1966	B. J. Sloan, Jr.	W. R. Paine	R. E. Gernant R. V. Kesling	B. J. Sloan, Jr.
1967	H. Yarborough, Jr.	W. A. Price	J. Ewing (tie) J. C. Meyers (tie)	H. Yarborough, Jr.
1968	J. D. Myers	E. H. Rainwater	D. J. Hughes	J. D. Myers
1969	P. O. Roehl	J. K. Rogers	D. F. McNamee (tie) L. F. Brown (tie)	J. K. Rogers
1970	J. J. Amoruso	R. R. Berg	J. F. Harris	J. J. Amoruso
1971	H. Yarborough, Jr.	D. A. Reel (tie) G. M. Griffin B. J. Sloan (tie) J. A. Hartman (tie)	Not awarded	H. Yarborough, Jr.
1972	R. R. Berg	M. T. Halbouty	J. J. Amoruso	R. R. Berg
1973	R. D. Woods J. W. Addington	R. D. Ottman P. L. Keyes M. A. Ziegler	R. R. Berg F. L. Findley	J. M. Coleman L. D. Wright
1974	D. H. Kupfer	J. M. Coleman L. D. Wright J. N. Schyda T. Whelan	C. A. Parker	D. H. Kupfer

Past Recipients, Best Paper Awards, and A.I. Levorsen Memorial Awards
 Gulf Coast Association of Geological Societies, continued

	First Award	Second Award	Third Award	A. I. Levorsen Award*
1975	W. L. Seal J. A. Gilreath	J. D. Myers	B. P. Baganz J. C. Horne J. C. Ferm	J. D. Myers
1976	J. D. Robinson A. R. Troell	J. W. Becher C. H. Moore A. R. Troell	N. Neel	J. D. Robinson
1977	D. K. Davies W. R. Almon	J. O. Lewis	J. O. Snowden W. B. Simmons E. B. Troughber R. W. Stephens	D. K. Davies W. R. Almon
1978	C. T. Siemers	J. W. Lund J. S. King R. E. Berlitz J. A. Gilreath	E. F. McBride	C. T. Siemers
1979	C. D. Winker	R. R. Berg	C. C. Christina K. G. Martin	R. R. Berg
1980	E. A. Mancini D. J. Benson	F. W. Harrison, Jr.	G. N. Gatenby	E. A. Mancini D.J. Benson
1981	E. C. Roy, Jr. M. Eidelbach N. Trumbly	J. L. Coleman, Jr. C. J. Coleman	G. J. Grabowski, Jr.	E.C. Roy, Jr. M. Eidelbach N. Trumbly
1982	T. E. Ewing S. C. Caran	D. J. Benson E. A. Mancini	R. R. Berg M. F. Habeck	T. E. Ewing S. C. Caran
1983	J. W. Cagle M. A. Khan	W. M. Ahr H. B. Hull, Jr.	T. E. Ewing (tie) C. H. Moore (tie)	J. W. Cagle M. A. Khan
1984	G. Kinsland	S. K. Stewart	C. L. Sartor S. R. Howard	G. Kinsland
1985	C. C. Walters M. R. Cassa	E. A. Mancini R. M. Mink B. L. Bearden	A. L. Workman J. S. Hanor	W. E. Galloway
1986	S. P. Dutton	A. H. Saller B. R. Moore	J. M. Coleman D. P. Prior H. H. Roberts	S. P. Dutton
1987	S. P. Dutton R. Finley K. Herrington	R. Evans	C. Black R. Berg	S. P. Dutton R. Finley K. Herrington
1988	M. P. Prescott	J. J. O'Brien I. Lerche	D. F. Williams I. Lerche	J. J. O'Brien I. Lerche
1989	Peter Hutchinson	N. M. Kuich	William Wade Jeffery Hanor Roger Sassen	Peter Hutchinson
1990	Michael P. Prescott	Philip L. Cook, Jr. John D. Bush John C. Marble Robert D. Schneeflock	Daniel Tearpock Harvey Pousson	Michael P. Prescott

Past Recipients, Best Paper Awards, and A.I. Levorsen Memorial Awards
 Gulf Coast Association of Geological Societies, continued

	First Award	Second Award	Third Award	A. I. Levorsen Award*
1991	Andrew J. Davidoff	H. S. Sumner	Tom Ewing Grant Ferguson	Andrew J. Davidoff
1992	K. T. Barrow George B. Asquith Gary L. Causey	Raymond A. Levey Mark A. Sippel Robert J. Finley Richard R. Langford	J. Ulises Ricoy Joseph S. Yeh R. P. Major	Harry H. Roberts Douglas J. Cook Mark K. Sheedlo
1993	Wayne Carew Paul F. Ostendorf Glenn L. Krum	William A. Ambrose Raymond A. Levey Jose M. Vidal Mark A. Sippel James R. Ballard David M. Coover, Jr. Walter E. Bloxson	William D. DeMis Jeffrey V. Milliken	Wayne Carew Paul F. Ostendorf Glenn L. Krum
1994	John A. Rhodes	Barry E. Bradshaw Joel S. Watkins	Roger J. Barnaby R. Ramamoorthy Mark H. Holtz	John A. Rhodes
1995	Robbie R. Zenero David L. Seng Mark R. Byrnes Randolph A. McBride	Ezat Heydari William J. Wade Laurie C. Anderson	Arnold H. Bouma Henry deV. Wickens James M. Coleman	Mary J. Broussard Brian E. Lock
1996	J. C. Fiduk B. D. Trudgill M. G. Rowan P. Weimer P. E. Gale B. E. Korn R. L. Phair W. T. Gafford G. R. Roberts S. W. Dobbs C. K. Guu	C. Story	D. J. Hall	D. J. Hall
1997	Sharie M. Sartain B. E. See	Joseph C. Fiduk P. Weimer B. D. Trudgill M. G. Rowan P. E. Gale B. E. Korn R. L. Phair G. R. Roberts W. T. Gafford C. K. Guu R. Lowe	William J. Doyle R. G. Wonish T. Schroeder	Brad A. Robison R. Detomo, Jr. R. D. Gardner A. Speksnijder M. J. Styzen
1998	Gary L. Kinsland**	Thomas E. Ewing	Chip Story	Thomas E. Ewing

**Until 1997 this award was limited to papers in the GCAGS section of the meeting. Now all oral presentations are considered.

*This award is given by the AAPG to the paper that best exemplifies creative ideas in oil and gas exploration (first award, 1966).

† 1985 through 1990 *Transactions* erroneously shown as not awarded.

‡ Glaser and Walton received First Place in the Paleontology Division for their 1962 paper.

Past Recipients Best Poster Awards

Gulf Coast Association of Geological Societies

	First Place	Second Place	Third Place
1988	Glenn M. Pense	John A. Adamick Austin A. Sartin	Harry Roberts James Coleman
1989	Frank G. Cornish	R. D. McPhearson	Not awarded
1990	Thomas H. Fett	R. Brent Bray Jeffrey S. Hanor	Not awarded
1991	Michael J. DiMarco R. Craig Shipp	Jose Ulises Ricoy	Not awarded
1992	Thomas P. Bulling Al J. Kreqji	William C. Dawson Donald F. Reaser	Not awarded
1993	Arnold H. Bouma Donald A. Goddard	Wayne Carew Paul F. Ostendorf Glenn L. Krum	Not awarded
1994	Timothy H. Brown Lawrence Bruno Mike Green	Abu N. Chowdhury Donald L. Risch Andrew E. Hannan, Sr.	Not awarded
1995	Mervin Kontrovitz Jerry Marie Slack	Raymond Sturdivant, Jr. (tie) Gary A. Fulton, Jr. Frank E. Bains Joel K. Jordan (tie)	Not awarded
1996	Hank DeWitt (tie) Mike Globe Ray Sorenson Harry D. Roberts (tie)	Ali M. AlGhamdi Joel S. Watkins	Hughbert A. Collier Jorge O. Parra
1997	Richard H. Fillon Paul N. Lawless Rome G. Litton, III	Roger Tyler R. P. Major H. Scott Hamlin Mark H. Holtz Mark Vining	Frank R. Sheppard, III David N. Wright Patrick L. McGrievy
1998	T. F. Hentz B. J. Bascle L. D. Nixon R. H. Peterson C. J. John	J. C. Fiduk P. Weimer B. D. Trudgill M. G. Rown B. C. McBride	R. R. Pressler D. B. Walker

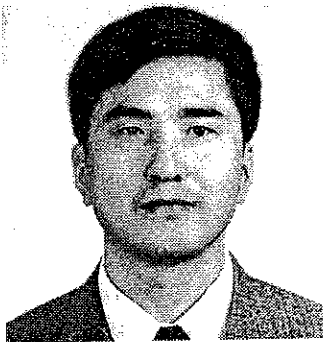
NOTE: Poster sessions and judging began in 1988.

1998 Best Paper Awards

Gulf Coast Section SEPM

First Place Best Paper Award:

**Jiafu Qi, Jack C. Pashin, and Richard H. Groshong, Jr.
For: Structure and Evolution of North Choctaw Ridge Field,
Alabama, a Salt-Related Footwall Uplift Along the
Peripheral Fault Systems, Gulf Coast Basin**



Jiafu Qi is a professor and the superintendent of the Institute of Geology at the University of Petroleum, Beijing. He majored in geology at the China University of Geosciences, Wuhan, during 1978-1981, and received his M.S. degree from the Graduate School of the Chinese Academy of Sciences in 1984 and his Ph.D. degree from China University of Geosciences, Beijing, in 1990. During 1985-1987, he taught Structural Geology to undergraduates in the China University of Geosciences, Wuhan, as a lecturer. During 1991-1992 he studied the tectonic evolution and dynamics of the Bohai Bay basin province as a postdoctoral researcher at the University of Petroleum, Beijing. He proposed the coexistence of extensional tectonic systems and strike-slip tectonic systems in Cenozoic Bohai Bay basin province. During 1997-1998 he worked as a visiting scholar at the University of Alabama. His current research interests focus on structural geology and tectonics of sedimentary basins. He has published over twenty research papers and two monographs on basin structural analysis. His teaching lectures include Structural Geology and Geotectonics to undergraduate students, Tectonic and Structural Analysis of Sedimentary Basins to graduate and doctoral students. In 1993, he was awarded the Silver Medal of Young Geologists presented by the Geological Society of China. In 1995, he was awarded the "Sun Yueqi Elitist Prize for Post-doctors" by the China Science & Technology Development Foundation and the Sun Yueqi Scientific & Technological Education Fund.



Jack C. Pashin is head of the Energy and Minerals Section at the Geological Survey of Alabama. Jack received a B.S. degree in Geology from Bradley University in 1982 and M.S. and Ph.D. degrees in Geology from the University of Kentucky in 1985 and 1990, respectively. Over the past decade, Jack has published numerous papers on the geology of conventional and unconventional hydrocarbon reservoirs and has won awards for his research on the stratigraphy and structure of coalbed methane reservoirs in the Black Warrior basin and the Appalachian thrust belt. His current research focuses on the application of structural models to developing reservoir management plans for coalbed methane and fractured chalk reservoirs. Dr. Pashin is active in several professional societies and currently serves as Vice President of the Energy and Minerals Division of AAPG.

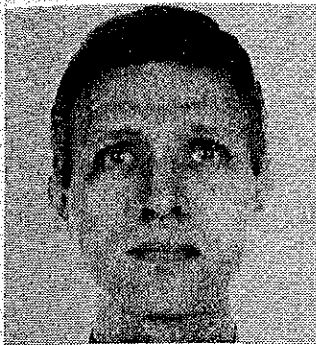


Richard H. Groshong, Jr. is a professor of Structural Geology at the University of Alabama in Tuscaloosa. He is also an instructor for Oil and Gas Consultants International (OGCI) for which he teaches courses on 3-D subsurface map interpretation and structural validation, balancing, and restoration. Rick received his B.S. degree from Bucknell University in 1965, his M.A. from the University of Texas at Austin in 1967, and his Ph.D. from Brown University in 1971. He taught for three years at Syracuse University, then joined Cities Service Oil Company as a research geologist in their Tulsa laboratory. In his ten years with Cities Service he rose from research geologist to manager of structural research and finally to senior research associate. He joined the University of Alabama in 1983. In the fall of 1998 he was the Visiting Chair d'honneur at l'Universite de Lausanne, Switzerland. He was an AAPG Distinguished Lecturer in 1989-1990 and was elected Chairman of the Geological Society of America's Structure and Tectonics Division in 1994. He has published over seventy four papers, seventy seven abstracts, and has recently finished a book titled 3-D Structural Geology. The book, published by Springer, is designed to be a practical guide to subsurface and surface map construction and interpretation for professional geologists.

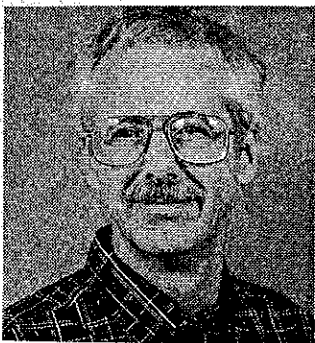
Second Place Best Paper Award:

Ralph A. Nolte and D. Joe Benson

For: Silica Diagenesis of Mississippian Carbonates of Northern Alabama



Ralph A. Nolte currently works as an environmental engineer for Westinghouse Anniston, where he focuses his efforts on regulatory compliance matters and on ensuring that their various chemical incinerators are built in accordance with environmental requirements. From 1992 to 1997, he worked for the Westinghouse Idaho Operations Field Office, where he served as the Functional Area Manager for RCRA Compliance. From 1988 through 1992, Ralph worked for the US EPA Office of Superfund as a manager of remediation projects. Ralph received his B.S. degree in Geology from the University of Illinois in 1984, and his M.S. degree in geology from the University of Alabama, in 1988. This paper is his first publication effort.

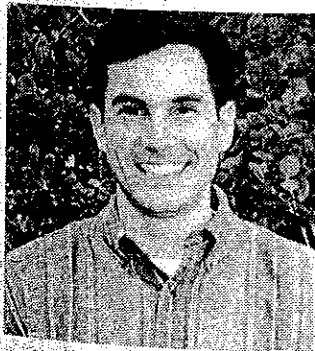


D. Joe Benson is a native of Beach City, Ohio. He received his B.A. degree from the College of Wooster and his M.S. and Ph.D. degrees from the University of Cincinnati. From 1973 through 1978 he was a research geologist with the Ohio Division of Geological Survey's Lake Erie Division. In 1978 he joined the faculty of the University of Alabama where he is now an Associate Professor of Geology. From 1990 through 1998 he served as Chairman of the Department of Geology and since 1998 has served as Assistant Dean for Natural Sciences and Mathematics in the College of Arts and Sciences. Joe has taught undergraduate and graduate courses in the areas of stratigraphy, sedimentology, depositional environments, and sedimentary petrology. He and his students have been involved in research on the stratigraphy, environments of deposition, and diagenesis of Paleozoic and Mesozoic sedimentary rocks in the southern Appalachians and the Eastern Gulf Coastal Plain. He has published over 100 papers and abstracts and has given over 60 presentations at professional meetings.

Third Place Best Paper Award:

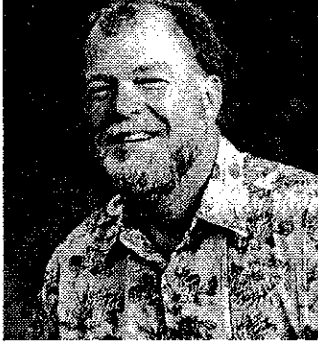
Antonio B. Rodriguez, John B. Anderson, and John Bradford

**For: Holocene Tidal Deltas of the Trinity Incised Valley:
Analog for Exploration and Production**

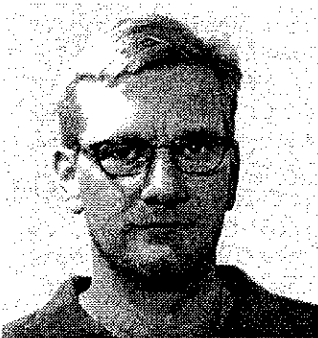


Antonio B. Rodriguez completed his B.A. in geology from Hamilton College in Clinton, New York (1994), and his Ph.D. in geology and geophysics from Rice University in Houston, Texas (1999). He worked for Corning, Inc., during the summer of 1995 as an assistant researcher and for Conoco during the summer of 1997 as an assistant geologist. His primary research interest is coastal sedimentology and more specifically, how coastal environments respond to sea-level rise.

Third Place Best Paper Award *continued*



John B. Anderson completed his B.S. at the University of South Alabama (1968), his M.S. from the University of New Mexico in Albuquerque (1970), and his Ph.D. from the Florida State University (1972). He was Assistant Professor of Geology at Hope College from 1972 to 1975. In 1975, John moved to Rice University in Houston, Texas, where he currently is a full Professor in the Department of Geology and Geophysics. He has led the study of marine sedimentation on the Antarctic continental margin for two decades. In the past ten years his research has expanded to include high-resolution sequence stratigraphy of the Antarctic shelf. He examines the interrelated nature of ice sheet/ice shelf development and stability with global sea-level change. Since the mid-70's he has conducted investigations of the sedimentology and stratigraphy of the Gulf of Mexico. He focuses on understanding Quaternary evolution of the Gulf using high-resolution seismic data and sedimentological tools. He is the author of more than 100 refereed publications and 150 abstracts.



John H. Bradford received B.S. degrees in physics and engineering physics from the University of Kansas in 1994 and completed a Ph.D. in geophysics at Rice University in 1998. He worked as a research scientist at the Houston Advanced Research Center from 1997 to 1998, and is currently an Academic Professional Researcher at the University of Wyoming. His primary research interests include numerical modeling, imaging, and attribute analysis of shallow seismic and GPR data for environmental applications.

Past Recipients

Best Published Papers Awards

Gulf Coast Section SEPM

	Best Published Paper	Excellence of Presentation
1981†	T. A. Daws A. V. Applegate J. C. Palacas	C. R. Handford
1982	J. Mazzullo	C. D. Winker
1983	E. C. Kosters A. Bailey	D. B. Prior
1984	M. J. Ulrich J. R. Kyle P. E. Price	M. Kontrovitz
1985	Paul A. Thayer Harry H. Roberts	Gordon W. Fielder
1986	Douglas F. Williams Dwight M. Trainor	Robert R. Berg
1987	Wayne Isphording Dewayne Imsand George Flowers	Rowdy Lemoine (tie) Earle McBride (tie)
1988	Ron Boyd Shea Penland	Edward McFarlan, Jr.
1989	Ron Boyd John Suter Shea Penland	Harry H. Roberts
1990	George C. Flowers Wayne C. Isphording	Jory A. Pacht
1991	Brian E. Lock Catherine E. Bishop	Andrew J. Pulham

*Before 1981 and since 1992, awards were given for first, second, and third place.

†and Best Poster award to E. A. Mancini.

Past Recipients

Best Published Papers Awards

Gulf Coast Section SEPM

	First Place	Second Place	Third Place
1970	W.W. Hay S. W. Wise, Jr. R. D. Stieglitz	J.B. Dunlap	W.L. Fisher C. V. Proctor, Jr. W. E. Galloway J. S. Nagle
1971	R. D. Maxwell	C. W. Poag	E. A. Shimm
1972	W. F. Tanner	A. E. Weidie J. L. Wolleben E. F. McBride	P. A. Thayer D. A. Textoris
1973	W. F. Tanner	R. J. Moiola A. B. Spencer	P. A. Thayer (tie) W. J. Cleary P. O'Donnell (tie) A. P. Wright
1974	G. M. Friedman	W. F. Tanner C. R. Berquist	R. J. Moiola D. Weiser A. B. Spencer W. C. Isphording
1975	J. L. Wilson M. E. York	K. F. Wantland	
1976	C. J. Stuart C. A. Caughney	R. R. Berg R. R. Powell	C. W. Poag P. C. Valentine
1977	C. D. Winker J. D. Howard	W. C. Isphording V. R. Baker	R. M. Looney
1978	A. Thomson	C. W. Poag	J. A. Schiebout
1979	L. C. Price J. L. Clayton L. L. Rumen	C. W. Poag R. C. Tresslar	R. E. Casey L. W. Gust R. A. Reynolds D. H. Williams A. Levesley T. Duis J. M. Spaw
1980	A. W. Cleaves	I. L. Van Heerden	T. A. Hansen
1992*	E. G. Otvos W. E. Howat	D. W. Harrelson J. A. Saunders	W. T. Tanner
1993	R. L. Adams	S. Q. Breard A.D. Callender M. J. Nault	E. C. McDade R. S. Sassen L. M. Wenger G. A. Cole
1994	M. D. Blum D. M. Price	R. A. Eustice L. S. Land	H. H. Roberts A. Bailey G. J. Kuecher
1995	S. Q. Breard G. L. Stringer	R. A. McBride M. R. Byrnes	C. C. Smith A. Bailey G. J. Kuecher
1996	S. Q. Breard A. D. Callender, Jr. M. J. Nault	Harry H. Roberts	P. Hansley
1997	J. S. Hanor	B. Fu	P. N. Lawless R. H. Fillon R. G. Lytton, III
1998**	J. Qi J. C. Pashin R. H. Groshong, Jr.	R. A. Nolte D. J. Benson	A. B. Rodriguez J. B. Anderson J. Bradford

**Until 1997 this award was limited to papers in the SEPM section of the meeting. Now all oral presentations are considered.

Officers and Committees

Forty-Ninth Annual Convention – 1999

Officers

Chairman
Tim Rynott

President
Brian Lock

Vice-Chairman
Barry Wawak

Secretary
Jana DaSilva

Vice-Chairman, SEPM
Garry Jones

Treasurer
Tim Doré

1999 Convention Committees

AV/Speakers
Tim Duex

Advertising
Jim Dungan

Alumni Functions
Joe Phillips

Arrangements
Dave Etienne
Ben Sydboten

Crisis
Bryan Groves

DPA Luncheon
Peter Gray

Editor, GCAGS
William Terrell

Editor, GCCSEPM
Lana Czerniakowski

**Assistant Editor,
GCSSEPM**
Garry Jones

Employment
Clyde Courtright

Exhibits
Danny Frederick
Buddy Powell

Field Trips, Chairman
Barry Wawak
Lawrence Baria
John Hollier
Brian Lock

**GCAGS Sponsorships,
Chairman**
Vince DeBonis

**GCAGS Sponsorships,
Co-Chairman**
Hal Miller
Mike Liebelt
Tony Cagle
Jerry Yunker
Barry Wawak
Rick Goode
Kenny Inzerella

Golf
Andy Vodicka
Tim Doré
Roger Bohanan
Mike Norse
Ellis Guilbeau
David Sturlese
Myra Hamburn

Housing
Randy Dautrive

Icebreaker
Pat Hurley
Jean Hurley

Judging & Awards
Mike Nault

Poster Sessions
Jack Shirley
Frank Vincent

Printing
Mella Viera

Publicity
Mike Cox
Mark Normand

Registration
Cathy Bishop
Karen Broussard

Short Courses
Dan Tearpock
Rusty Blackburn

Spouse Activities
Charlotte Rynott-Chairman
Committee Co-Chairs
Jean Smart
Beverly McLean
Julaine Gray
Martha Zastrow

Technical Program
William Finley
Lana Czerniakowski
Garry Jones
Brian Lock
James Willis
Tim Duex
Joe Brewton
Dave Watson

Tobin Theatre
Garry Kinsland
Rusty Blackburn

Transportation
Leale Slate
Barry Wawak

Website
Karen Broussard

Board of Directors

Gulf Coast Association of Geological Societies 1998-1999

President.....	Brian E. Lock
Vice President.....	Jeff Lund
Secretary.....	Jana DaSilva
Treasurer.....	Tim Doré
Past President.....	Robert F. Travis
Finance Committee Chairman.....	Howard W. Kiatta

Representatives from Member Societies

Alabama Geological Society.....	Charles Smith
Austin Geological Society.....	Robert H. Blodgett
Baton Rouge Geological Society.....	Oscar Huh
Corpus Christi Geological Society.....	Scott Wruck
East Texas Geological Society.....	Fred Marshall
Houston Geological Society.....	Charles Sternbach
Lafayette Geological Society.....	Robert Brekke
Mississippi Geological Society.....	Stanley King
New Orleans Geological Society.....	Irion J. Bordelon, Jr.
Shreveport Geological Society.....	Scott D. Stroud
South Texas Geological Society.....	Robert Scott
Southeastern Geological Society.....	Cornelius Winkler

Officers of Member Societies

Gulf Coast Association of Geological Societies

June 1999

Alabama Geological Society, P.O. Box 866184, Tuscaloosa, Alabama 35486

President.....Charles Smith
Vice President.....Mark G. Steltenpohl
Secretary.....T. Markham Puckett
Treasurer.....Lewis S. Dean

Austin Geological Society, P.O. Box 1302, Austin, Texas 78767

President.....Robert H. Blodgett
President Elect.....Nico M. Hauwert
Vice President.....Ron Johns
Secretary.....Heather Beatty
Treasurer.....Robert Mace

Baton Rouge Geological Society, Inc., P.O. Box 19151, University Station, Baton Rouge, Louisiana 70893

President.....Oscar Huh
Vice President/President Elect.....Steven E. Whitting
Secretary.....Dru Trahan
Treasurer.....Brad Hanson

Corpus Christi Geological Society, P.O. Box 1068, Corpus Christi, Texas 78403

President.....Scott Wruck
President Elect.....Alan Costello
Vice President.....David Hatridge
Secretary.....John Carnes
Treasurer.....Tom Jones

East Texas Geological Society, P.O. Box 216, Tyler, Texas 75710

President.....Fred Marshall
Vice President.....Jim Bedford
Secretary-Treasurer.....Bob Hulse

Houston Geological Society, 7457 Harwin, Suite 301, Houston, Texas 77036

President.....Charles Sternbach
President Elect.....Craig E. Moore
Vice President.....Paul Hoffman
Secretary.....Denise Stone
Treasurer.....Dave Rensink

Officers of Member Societies, Gulf Coast Association of Geological Societies (continued)

Lafayette Geological Society, P.O. Box 51896, Lafayette, Louisiana 70505

President.....Robert Brekke
 President Elect.....Danny Frederick
 Vice President.....Ted Gard
 Secretary.....Jana DaSilva
 Treasurer.....Mike Cox

Mississippi Geological Society, P.O. Box 422, Jackson, Mississippi 39205

President.....Stanley King
 First Vice Presiden.....John Marble
 Second Vice President.....Larry Baria
 Secretary.....Steve Ingram
 Treasurer.....Lindsey Stewart

New Orleans Geological Society, Suite 932, 234 Loyola Building, New Orleans, Louisiana 70112

President.....Iriou Bordelon, Jr.
 President Elect.....Eugene R. Brumbaugh
 Vice President.....Michael M. Ledet
 Secretary.....Jeanne F. Phelps
 Treasurer.....Thomas C. Bergeon

Shreveport Geological Society, P.O. Box 750, Shreveport, Louisiana 71162

President.....Scott D. Stroud
 First Vice President.....Glenn E. Kelly
 Second Vice President.....Gary Abrams
 Secretary.....Dan Scurlock
 Treasurer.....Gregory J. Zerrahn

South Texas Geological Society, D-100 Petroleum Center, San Antonio, Texas 78209

President.....Robert (Bob) Scott
 President Elect.....Mark Norville
 Vice President.....Stewart Chuber
 Secretary.....John Waugh
 Treasurer.....Dena Schmidt

Southeastern Geological Society, P.O. Box 1634, Tallahassee, Florida 32302

President.....Cornelius "Wink" Winkler
 Vice President.....Mark Hurst
 Secretary/Treasurer.....Cliff Harrison

1999 Executive Council

Gulf Coast Section SEPM

Officers

President

R. P. "Rick" Major
Department of Geology & Geological
Engineering
The University of Mississippi
University, MS 38677
(601) 232-5440; Fax (610) 232-5998
rpm@cedar.olemiss.edu

President-Elect

Michael J. Styzen
Shell Offshore, Inc.
P. O. Box 61933
New Orleans, LA 70161
(504) 728-4308; (504) 728-0554
mstyzen@shellus.com

Vice President

Harry H. Roberts
Coastal Studies Institute
Louisiana State University
Baton Rouge, LA 70803
(225) 388-2964; Fax (225) 388-2520
hrober3@lsu.edu

Secretary

Ron W. Waszczak
Conoco, Inc.
P.O. Box 2197
Houston, TX 77252-2197
(281) 293-3088; Fax (281) 293-3833
ron.f.waszczak@usa.conoco.com

Treasurer

Norman C. Rosen
NCR & Associates
2719 S. Southern Oaks
Houston, TX 77068
(281) 893-6646; Fax (281) 586-0833
rosen@neosoft.com

Past-President

James O. Jones
Department of Geology
The University of Texas at San Antonio
San Antonio, TX 78249-0663
(210) 458-4455; Fax (210) 458-4469
jjones@lonestar.utsa.edu

Foundation Trustees

Michael J. Nault
Applied Biostratigraphix
717 East 8th Street
Houston, TX 77007
Ph./Fax (713) 868-7444
biostrat@aol.com

Nancy Engelhardt-Moore
The Andrews Group International
1800 Augusta Dr. - Suite 200
Houston, TX 77057-3130
(713) 782-3502; Fax (713) 782-9639
nengelha@agi-hou.com

Edward B. Picou, Jr.
234 Loyola Ave. - Suite 917
New Orleans, LA 70112-2016
(504) 529-5155; Fax (504) 561-8988
epicou@aol.com

Standing Committees

Gulf Coast Association of Geological Societies

June 1999

AAPG Advisory

E. Gerald Rolf

Awards and Nominations

James O. Jones, Chairman

Bob Travis

Mark J. Gallagher

E. Gerald Rolf

William E. Marsalis

Convention

Daniel Smith, Chairman

Howard Kiatta

Birdena Schroeder

Gloria Sprague

Dan Neuberger

John C. Langford

Gary W. Jacobs

Thomas E. Ewing

Bill Layton

Dave Pope

Rodney Jackson

Finance

Howard W. Kiatta, Chairman

Don R. Boyd

Gerald A. Cooley

Steve Hill

Marvin L. Smith

Student Grant Committee

Bonnie R. Weise, Chairman

Michael J. Roberts

Charles C. Smith

Historian

David E. Pope

Long-Range Planning

Peter G. Gray, Chairman

Bob Travis

Mark J. Gallagher

E. Gerald Rolf

William E. Marsalis

Publications

Robert E. Boyer, Chairman

David B. Bieler

Edward C. Roy, Jr.

William C. Ward

E. G. (Jerry) Wermund

Financial Aid to Students

Gulf Coast Association of Geological Societies

During 1999 the GCAGS Student Grant Committee received applications for financial assistance from students enrolled in graduate and undergraduate geology programs in eleven colleges and universities. The Student Grant Committee, Bonnie R. Weise (Chairman), Michael J. Roberts and Charles C. Smith recommended grants totaling \$14,250. The Committee's recommendation was approved by the Board of Directors at the GCAGS mid-year meeting and awards were made to the following students:

Heather E. Anderson	Louisiana State University
Sarah E. Calp	Baylor University
Amy Carter	University of Nebraska
Matthew S. Hackworth	Louisiana State University
Jenney M. Hall	Louisiana State University
Ed. H. Hamilton	University of Southwestern Louisiana
Jennifer L. Koch	University of New Orleans
Sarah R. Lindsay	University of Texas at Austin
Justin D. Mahan	Auburn University
Brian A. Michaels	University of Miami
Anne I. Nelson	Auburn University
Brook C. D. Riley	University of Texas at Austin
Ivana M. Stevanovic	Auburn University
Dennis A. Sylvia	University of Texas at Austin
Penny M. Taylor	University of Houston
William N. Ware	Auburn University
Adam E. Wheeler	University of Southwestern Louisiana

Past Officers and Convention Chairmen

Gulf Coast Association of Geological Societies

	Host City	President	Vice-President	Secretary	Treasurer	Convention Chairman
1951	New Orleans	L. Bowling	T. H. Philpott		E. M. Baysinger	
1952	Corpus Christi	W. M. Chaddick, Jr.	W. A. Gorman		T. D. Barber	
1953	Shreveport	R. T. Wade	D. D. Utterback	J. S. Spencer	K. Carter	W. J. Nugent
1954	Houston	W. R. Canada	W. H. Knight	W. A. Peterson	E. W. Kimball	
1955	Biloxi	A. E. Blanton	L. D. Traupe	F. H. Webster	C. C. Barber	R. D. Sprague
1956	San Antonio	R. L. Layden	M. W. Beckman	C. W. Holcomb	A. F. Scott	G. J. Joyce
1957	New Orleans	H. N. Hickey	P. Montgomery	R. A. Davis	K. C. Anderson	T. H. Philpott
1958	Corpus Christi	E. A. Lohse	R. W. Grayson	E. T. Musselman	W. H. Wallace, Jr.	R. C. Wilshusen
1959	Houston	G. C. Hardin, Jr.	L. Harvey	J. F. Moss	J. A. Wheeler	O. G. Bell
1960	Biloxi	M. F. Kirby	D. N. Osburn	W. W. Woolfolk	E. G. Jeffreys	A. E. Blanton
1961	San Antonio	D. Dassow	E. P. Roth	A. W. Wood	E. L. Ames	L. L. Palmer
1962	New Orleans	T. H. Philpott	J. C. Byrd	H. O. Woodbury	K. Soule	L. H. Meltzer
1963	Shreveport	J. C. Byrd	E. Knott	W. E. Bancroft	R. E. Rogers	H. J. Tyler
1964	Corpus Christi	K. Knott	R. E. Fairchild	R. W. Luker	D. A. Pedrotti	B. F. Dyer
1965	Houston	R. E. Fairchild	A. M. Borland	K. C. Harkins, Jr.	J. L. George, Jr.	E. A. Lohse
1966	Lafayette	A. M. Borland	J. H. Hensley	W. A. Robbins, Jr.	J. S. Schoelen	R. R. Copeland
1967	San Antonio	W. L. Stapp	M. D. Horton	M. L. Frazier, Sr.	L. C. Bryant	M. O. Turner
1968	Jackson	M. D. Horton	R. O. Vernon	L. G. Hughes	E. D. Minihan	L. E. Warren
1969	Miami	R. O. Vernon	H. J. Tyler	J. W. Yon, Jr.	C. W. Hendry, Jr.	H. S. Puri
1970	Shreveport	H. J. Tyler	L. H. Meltzer	C. E. Brown	B. C. Tucker	J. O. Goffe
1971	New Orleans	L. H. Meltzer	D. R. Boyd	M. L. Dwight	P. G. Gray	R. G. Williamson
1972	Corpus Christi	D. R. Boyd	F. M. Schall, Jr.	M. H. Oakes	J. E. Melton	J. M. Sides
1973	Houston	F. M. Schall, Jr.	S. J. Lysinger	M. E. Hole, Jr.	P. W. Cauthon, Jr.	C. E. Harrison
1974	Lafayette	S. J. Lysinger	W. H. Moore	T. J. Eby, Jr.	J. L. Bellamy	F. W. Harrison, Jr.
1975	Jackson	W. H. Moore	C. L. Sartor	W. E. Taylor	H. L. Ladner	C. H. Williams, Jr.
1976	Shreveport	C. L. Sartor	R. E. Boyer	J. T. Palmer	C. E. Brown	L. E. Jordan
1977	Austin	R. E. Boyer	P. G. Gray	A. E. Bell	F. L. Osborne, Jr.	E. G. Wermund, Jr.
1978	New Orleans	R. W. Stephens	E. C. Roy, Jr.	R. M. Swords	C. J. Corona	J. Braunstein
1979	San Antonio	E. C. Roy, Jr.	F. W. Harrison, Jr.	S. L. Perkins	L. C. Bryant	G. His
1980	Lafayette	F. W. Harrison, Jr.	P. M. Strunk	J. W. Shirley	R. A. Anderson	M. A. Munchrath
1981	Corpus Christi	P. M. Strunk	J. J. Amoruso	T. J. Wintermute	W. R. Payne	Wilson Humphrey
1982	Houston	J. J. Amoruso	S. C. Childress	C. G. Beckwith	C. A. Baird	J. O. Lewis
1983	Jackson	S. C. Childress	J. P. Palmer	S. A. Horton	P. D. Cate	J. C. Marble
1984	Shreveport	J. T. Palmer	E. G. Wermund	C. S. Cook	E. W. Saye	J. M. Forgotsen, Jr.
1985	Austin	E. G. Wermund	D. E. Pope	R. Everett	D. C. Ratcliff	L. E. Garner
1986	Baton Rouge	D. E. Pope	R. H. Sams	B. D. David	F. E. Lindfors-Kearns	H. L. Roland
1987	San Antonio	R. H. Sams	J. A. Hartman	M. T. Tobin	T. Cooper	D. F. Tobin
1988	New Orleans	J. A. Hartman	W. R. Payne	R. W. Sabaté	J. E. Bailey	C. C. Baker
1989	Corpus Christi	W. R. Payne	P. G. Gray	B. E. Gaither	T. B. Henderson	G. M. Heinzelmann
1990	Lafayette	P. G. Gray	C. E. Harrison	H. Fielding	B. Smart	B. E. Lock
1991	Houston	C. E. Harrison	J. C. Marble	H. W. Kiatta	L. D. Bartell	D. L. Smith
						C. Noll
1992	Jackson	J. C. Marble	R. L. Williamson	W. Lester Aultman	Stanley King	S. C. Knox
1993	Shreveport	R. L. Williamson	W. L. Fisher	Mark Schroeder	B. R. White	O. R. Berg
						J. P. Wanger
1994	Austin	W. L. Fisher	W. E. Marsalis	S. P. Dutton	C. Condon	P. R. Rose
1995	Baton Rouge	W. E. Marsalis	E. Gerald Rolf	S. N. Breakfield	R. W. Jackson	R. E. Pope
1996	San Antonio	E. Gerald Rolf	Mark J. Gallagher	William P. Wilbert	Bill Layton	Thomas E. Ewing
1997	New Orleans	Mark J. Gallagher	Robert F. Travis	Eric C. Broadbridge	Gary W. Jacobs	John C. Langford
1998	Corpus Christi	Robert F. Travis	Brian E. Lock	Lawrence Hoover	Daniel Neuberger	Gloria Sprague
1999	Lafayette	Brian E. Lock	Jeff Lund	Jana DaSilva	Tim Doré	Tim Rynott

Past Officers

Gulf Coast Section SEPM

	President	Vice-President	Secretary	Treasurer
1953-1954	Stuart A. Levinson	Grover E. Murray	William H. Akers	Frank V. Stevenson
1954-1955	Charles W. Stuckey, Jr.	E. H. Rainwater	William H. Akers	Fred L. Smith, Jr.
1955-1956	E. H. Rainwater	Frank S. Westmoreland	Hugh A. Bernard	Eleanor T. Caldwell
1956-1957	Lloyd M. Pyeatt	J. O. Colle	H. Dillingman, Jr.	Eleanor T. Caldwell
1957-1958	J. O. Colle	Fred L. Smith, Jr.	Harold V. Anderson	William G. Parker
1958-1959	Marcus A. Hanna	Claude M. Quigley	Fred E. Smith	Bernard L. Hill, Jr.
1959-1960	David E. Pope	A. D. Ellis, Jr.	Gordon C. Munsey	H. A. Chun
1960-1961	Claude M. Quigley	Harold V. Anderson	E. Ann Butler	Edward Marks
1961-1962	Harold V. Anderson	Theodore D. Cook	Benjamin J. Petrusek	Albert D. Warren
1962-1963	Albert D. Warren	Ernest H. Horton	Blair S. Parrott	Henry H. Phillips
1963-1964	Lyman D. Toulmin	E. Ann Butler	Charles C. Albers	John E. Kilgore
1964-1965	Howard L. Tipsword	Benjamin J. Petrusek	D. Jeter Smith	Emmett R. Adams
1965-1966	John B. Dunlap, Jr.	John J. W. Rogers	M. Ray Bane	Charles B. Morris
1966-1967	Hubert C. Skinner	Richard P. Zingula	Gene Ross Kellough	Gene B. Martin
1967-1968	Benjamin J. Petrusek	Dan McGregor	Garrett Briggs	Herbert A. Elliot, Jr.
1968-1969	William A. Atlee	Edgar B. O'Quinn	James W. Fowler	William E. Steinkraus
1969-1970	Fred L. Smith, Jr.	Kenneth L. Loep	Robert K. Sylvester	C. Wylie Poag, Jr.
1970-1971	Jules Braunstein	Douglas E. Jones	Walter H. Trenchard	Robert N. Davids
1971-1972	William W. Hay	William E. Steinkraus	Karl J. Koenig	Gerald R. Stude
1972-1973	C. Wylie Poag, Jr.	Emmett R. Adams	Gerald R. Stude	Joan B. Strough
1973-1974	Edward B. Picou, Jr.	Walter H. Trenchard	Lawrence C. Menconi	J. Lloyd Tuttle, Jr.
1974-1975	Emmett R. Adams	Clifton A. Couture	Herbert A. Elliott, Jr.	Doris M. Curtis
1975-1976	James L. Lamb	Lawrence C. Menconi	William S. Grubb	John L. Carney
1976-1977	Clifton A. Couture	Eleanor T. Caldwell	Sherwood W. Wise, Jr.	Joseph E. Boudreaux
1977-1978	Gerald R. Stude	William P. S. Ventress	Gary R. Roberson	George C. Esker, III
1978-1979	Willard P. Leutze	Bob F. Perkins	Walter P. Kessinger	Kenneth A. Hodgkinson
1979-1980	Gene B. Martin	John L. Carney	Mary Ann Rafle	Arthur S. Waterman
1980-1981	Bob F. Perkins	Don G. Bebout	Sheila C. Barnette	Ted Karmen
1981-1982	William P. S. Ventress	Kenneth A. Hodgkinson	Brian J. O'Neill	Kurt Geitzenauer
1982-1983	John L. Carney	Ernest A. Mancini	Susan J. Conger Morris	Kevin C. Kilmartin
1983-1984	Don G. Bebout	Michael J. Nault	Susan J. Conger Morris	Nelson B. Yoder
1984-1985	Ernest A. Mancini	J. M. Crosbie	John G. McPherson	John B. Anderson
1985-1986	Susan J. Conger Morris	Arthur S. Waterman	John G. McPherson	Richard E. Constans
1986-1987	Charles L. McNulty	Denise M. Butler	Kurt G. Geitzenauer	Sylvester Q. Breard, Jr.
1987-1988	Arthur S. Waterman	Brian J. O'Neill	Ramil C. Wright	Charles G. Rosato
1988-1989	Samuel P. Miano	Charles C. Smith	Richard H. Fillon	Bethanne Breisacher
1989-1990	Sheila C. Barnette	Michael J. Nault	Nancy Engelhardt-Moore	Michael W. Center
1990-1991	Denise M. Butler	Charles C. Smith	Nancy Engelhardt-Moore	Kurt Geitzenauer
1992	Michael J. Nault	Brian E. Lock	Mary (Missy) Jackson	Elaine H. Collison
1993	John M. Armentrout	David W. Ford	Mary (Missy) Jackson	Elaine H. Collison
1994	Nancy Engelhardt-Moore	Mary (Missy) Jackson	Michael J. Styzen	Elaine H. Collison
1995	Charles C. Smith	William C. Ward	Michael J. Styzen	Richard J. White
1996	Rachel N. Rosen	James O. Jones	R. P. Major	Richard J. White
1997	Paul Weimer	Sylvester Q. Breard	R. P. Major	Michael J. Styzen
1998	James O. Jones	Michael W. Center	Ron F. Waszczak	Michael J. Styzen
1999	R. P. (Rick) Major	Harry H. Roberts	Ron F. Waszczak	Norman C. Rosen

Bylaws

Gulf Coast Association of Geological Societies, Inc.

Part A: Organization

ARTICLE I—Name

This is a non-profit organization and shall be known as the "Gulf Coast Association of Geological Societies, Inc." It is hereinafter referred to as "This Association."

ARTICLE II—Object

The object of This Association is to provide for discussion and publication of papers on subjects and problems coming within the scope of the Geological profession and with particular emphasis on Gulf Coast geology.

ARTICLE III—Organization

This Association is an organization of AAPG-affiliated Geological Societies in the Gulf Coast area.

Section 1.

The business of This Association shall be transacted by a Board of Directors composed of one representative from each member society and the President, Vice-President, Secretary, Treasurer, and Past President. The Vice-President, Secretary, and Treasurer shall be elected by the Board of Directors at the annual meeting. At the request of the Vice President's society, however, the Secretary and Treasurer may be elected at a prior Board meeting but they will not take office until after the annual meeting. The Secretary and Treasurer shall be non-voting members of the Board of Directors. The Secretary and Treasurer shall be nominated by the Executive Committee of the local Geological Society next in line to host the annual meeting. The Vice-President shall be nominated by the Executive Committee of the host society for the annual meeting two years hence and shall accede to the Presidency. Thus each year the President, Secretary and Treasurer will be from the host society with the Vice President providing continuity with the Board of Directors as he assumes the Presidency in the ensuing year. The duties of these officers shall be those customary to their respective offices.

The GCAGS representative to the Advisory Council of American Association of Petroleum Geologists shall be selected by the Board of Directors of GCAGS and shall be an ex-officio, non-voting member of the GCAGS Board of Directors.

Each member society shall designate a representative to the Board of Directors and in the event the chosen representative cannot attend any given Board of Directors meeting, an alternate representative shall be appointed by the member society to attend and vote in the absence of the representative. The representative, when practicable, shall be an officer or past officer of the society he represents.

Each society shall have one vote on actions taken by the Board of Directors with the exception that the host society, the next annual host society and the immediate past host society will be entitled to two votes by virtue of their members holding the offices of President, Vice President and Past President.

The officers of the Board of Directors shall be elected for a term of one year. They shall be elected and assume their duties as soon after the annual meeting of This Association as is practicable, except as noted in Paragraph 1 with regard to the Secretary and Treasurer. Any vacancies shall be filled by the Board of Directors as provided above in Paragraph 1.

Section 2.

The business of This Association shall be conducted by the Board of Directors. A simple majority vote of the members present at meetings is required to effect decisions, except in those matters which require a greater majority, as set forth in these Bylaws.

A quorum shall consist of more than one-half of the voting members of the Board of Directors.

The Executive Committee composed of the President, Vice-President, Secretary, Treasurer, Past President, and Finance Committee Chairman shall have the authority to transact business of an emergency nature between meetings. Any business so transacted shall be subject to ratification by the Board of Directors at its next regularly scheduled meeting. A quorum of the Executive Committee shall be three members.

ARTICLE IV—Meetings

There shall be an annual meeting of This Association, the time and place of which shall be determined by the Board of Directors. Additional meetings may be called at the discretion of the Board of Directors.

ARTICLE V—Publications

There shall be an annual Transactions published by This Association, which shall contain papers presented at the annual meeting, and such other material as selected by the Board of Directors. The Board of Directors is authorized to have published additional bulletins, and other material which they feel will further the object of This Association.

ARTICLE VI—Funds

The funds of This Association shall be deposited in any federally insured bank or savings and loan association or in any fully insured account of a major securities firm selected by the Finance Committee, to the credit of this Association, or invested in U.S. Government Bonds at the discretion of the Finance Committee.

ARTICLE VII—Amendments

Amendments to this Part A and to the Articles of Incorporation may be proposed by the Board of Directors, or by any two member societies. Proposed amendments shall be submitted to each of the member societies in writing. It shall require an affirmative vote of three-fourths of the member societies to ratify such an amendment.

ARTICLE VIII—Later Affiliation

Non-member Geological Societies in the Gulf Coast Area which are affiliated with AAPG may petition the Board of Directors for membership and shall be accepted by an affirmative vote of three-fourths of the Board of Directors.

ARTICLE IX—Resignation

Any member society may resign from This Association at any time by written notice to the Board of Directors. There shall be no obligation to transfer to such resigning society any portion of This Association's funds.

ARTICLE X—Dissolution

This Association shall terminate at such time as a majority of the member societies shall so vote. Upon dissolution all funds and other property shall be divided as mandated by the Articles of Incorporation.

Part B: Committees, Finances

ARTICLE I—Permanent Committees

The President, with the approval of the Board of Directors, shall appoint the Annual Meeting Chairman, and the Publications Committee Chairman, appointments being for one year.

Section 1. Annual Meeting Chairman

The Annual Meeting Chairman shall direct the staging of the annual meeting, and shall have the authority to appoint such additional committees as he deems necessary.

Section 2. Publications

This committee shall be responsible for publishing all publications of This Association except the Transactions which fall under the purview of the Annual Meeting Chairman. Sales and storage of all GCAGS publications, including the Transactions, are the responsibility of this committee. The chairman shall provide annually to the Finance Committee an inventory of the GCAGS publications.

Section 3.

The President, with the approval of the Board of Directors, may appoint such additional committees as are necessary to conduct the business of This Association.

ARTICLE II—Treasurer

The Treasurer shall have the authority to issue checks against the Annual Meeting bank account of This Association on his sole signature, but in the event of his absence or incapacity to act, withdrawals or payments by checks may be made on the signature of the President during the continuance of the absence, or incapacity, of the Treasurer. In this event, the identity and authority of the President, and the circumstances relating to the absence or incapacity of the Treasurer shall be certified by the Board of Directors, if so required by the depository. The Treasurer shall submit a financial report on the Annual Meeting at each meeting of the Board of Directors and shall keep a set of books in accordance with good accounting practices. He shall submit the books of the Annual Meeting to the Finance Committee by March 1st following the Annual Meeting. The office of Treasurer shall be bonded as directed by the Board of Directors.

ARTICLE III—Finance Committee

The Finance Committee shall be responsible for investing and managing the funds of This Association. They shall be responsible for advancing to the Treasurer the necessary funds for operating the Annual Meeting and shall disburse funds for expenses and projects not related to the Annual Meeting as directed by the President upon approval by the Board of Directors. The Committee shall have authority to invest the funds as outlined in Article VI of Part A hereof. They shall prepare a financial report on the Association's funds and submit it at each meeting of the Board of Directors. They shall also keep an inventory of publications and equipment owned by the Association. They will keep a set of books in accordance with good accounting practices and will submit the books for auditing as requested by the Board of Directors. The Committee will oversee the preparation and submittal of the Association's Annual Income Tax Return. The Committee will also keep a file of these financial reports, as well as the report of the Treasurer for each Annual Meeting, for access by officers and representatives of the annual meetings for future years. The Committee shall consist of five members serving staggered three year terms, such that each year one to three members will complete their terms and one to three new members will be appointed. The President of the Association, with the approval of the Board of Directors, shall appoint the members of the Finance Committee and select its chairman. Members of the Finance Committee shall be bonded as directed by the Board of Directors. All checks of greater than \$1,000 shall be signed by two of the Finance Committee members.

ARTICLE IV—Amendments

This Part B may be amended by an affirmative vote of three-fourths of the Board of Directors.

ARTICLE V—Dues

There shall be no dues.

Bylaws

Gulf Coast Section of Economic Paleontologists and Mineralogists

ARTICLE 1. - OBJECT

1.01 The object of the Gulf Coast Section of the Society of Economic Paleontologists and Mineralogists is to promote the science of stratigraphy in the Gulf Coast states through research in paleontology and sedimentary petrology, especially as it relates to petroleum geology. The Corporation, herein referred to as the "Section," will be closely associated with the Gulf Coast Association of Geological Societies and will cooperate with it and with the local geological societies of which it is composed for the furtherance of mutual objectives.

ARTICLE 2. - MEMBERS

2.01 The Section shall have members, charter members, and honorary members.

2.02 Members shall be persons engaged in paleontologic, petrographic or stratigraphic studies that have application to the geology of petroleum and who work or reside in the Gulf Coast province of the states of Texas, Louisiana, Mississippi, Alabama, Georgia, or Florida, or whose interest or work is principally within these states. Membership, once obtained, shall not be dependent upon continued residence in the aforementioned states.

2.03 Charter members are those whose applications for membership were received before the first nomination of officers. They shall enjoy all the privileges of members, and, hereinafter, are included in all references to "members."

2.04 The Council may elect as honorary members persons who have contributed distinguished service to the science of stratigraphy paleontology or sedimentary petrology, especially as they relate to petroleum geology in the Gulf Coast. Honorary members shall not be required to pay dues.

2.05 Each candidate for membership shall submit to the Section an application on a form authorized by the Council for this purpose.

2.06 New members enrolled after December 1 shall be considered as having paid their dues for the next calendar year.

ARTICLE 3. - COUNCIL AND OFFICERS

3.01 Executive authority of the Section is vested in a board of directors known as the "Council" consisting of six members who are duly elected by the members, as follows: President, President-Elect, Vice President, Secretary, Treasurer; and the most recently retired Past President.

3.02 The President shall discharge the usual duties of a president, as well as act as presiding officer at all meetings of the Section and Council.

3.03 The Vice President shall assume the duties of the President in

the case of the absence or disability of the latter. The Vice President shall also be Chairman of the Membership Committee and as such shall keep a complete up-to-date list of members.

3.04 The Secretary shall keep the records of the proceedings of the Section and a complete list of the membership. The Secretary shall attend to the preparation and mailing of notices, membership application blanks and other materials necessary to the business of the Section.

3.05 The Treasurer shall have custody of all funds of the Section. The Treasurer shall keep account of the receipts and disbursements, and submit an accounting to the membership at the end of each year.

3.06 The Council shall have control and management of the affairs and funds of the Section.

3.07 The President and Vice President shall not serve for more than one (1) year, except that if the Vice President succeeds to the position of Acting President, the Acting President may be elected to a full term as President.

3.08 - In the event that neither the President nor Vice President is available to serve as presiding officer of the Section, the immediate Past President shall assume the President's duties.

3.09 The President-Elect shall serve for one (1) year as such, and in the following year the President-Elect shall assume the office of President. The President-Elect shall have not administrative authority except as a member of the Council. The President Elect shall acquaint himself with all the details of the office of President and generally prepare himself to serve as President. The President Elect shall be responsible for the preparation of the annual meeting for the ensuing year.

3.10 A vacancy occurring in the offices of Vice President, Secretary or Treasurer shall be filled by Council appointment.

3.11 A vacancy occurring in the office of President-Elect shall be filled by mail ballot by the membership through a special election called by the Council.

3.12 The Secretary and Treasurer shall serve for a term of two (2) years. These offices shall be renewable through election.

ARTICLE 4. - MEETINGS OF MEMBERS

4.01 The Section shall hold at least one stated meeting each year which shall be known as the Annual Meeting. This meeting will usually be held in conjunction with the Annual Meeting of the Gulf Coast Association of Geological Societies.

G
4.0
Se
As
Ch
be
Ch
na
Ar
Th
dir
4.0
be
5.0
ma
al
An
the
5.0
me
po
sid
6.0
anc
6.0
6.0
Ch
ber
Jur
6.0
ed
6.0
per
for
7.0
of
Co
(\$5
8.0
inst
Ele
tion
for
8.0
par

4.02 The program for the Annual Meeting shall be arranged by the Section Program Chairman in cooperation with the Gulf Coast Association of Geological Societies (GCAGS) designated Program Chairman. All Section concerns regarding the Annual Meeting shall be coordinated by the Section designated GCSSEPM Vice-Chairman. The Section designated GCSSEPM Editor shall coordinate with the GCAGS Editor on the editing and publication of the Annual Meeting proceedings known as the GCAGS Transactions. The Section designated Judging and Awards Chairman shall coordinate all Section Awards at the Annual Meeting.

4.03 At the time of the Annual Meeting, a Business Meeting may be held for the transaction of Section business.

ARTICLE 5. - AMENDMENT OF BYLAWS

5.01 These Bylaws may be amended by two-thirds vote of returned mail ballots received by the Secretary sixty (60) days after proposal of amendments with provision for vote is mailed to the members. Any proposed amendments must have the approval of a majority of the Council before being submitted to the members.

5.02 A petition containing the signatures of twenty (20) active members is considered sufficient to bring before the Council a proposed change in the Bylaws. A majority vote of Council is also considered sufficient to initiate a proposed change.

ARTICLE 6. - DUES

6.01 The fiscal year of the Section shall commence on January 1 and end on December 31.

6.02 The annual dues of the members shall be ten dollars (\$10.00).

6.03 A bill for dues shall be mailed by the Vice President, as Chairman of the Membership Committee, to all delinquent members by March 31 of each year. Members who have not paid by June 1 shall be dropped from the membership roles.

6.04 Members dropped for non-payments of dues may be reinstated following their payment of all delinquent dues.

6.05 Members may, at their discretion, pay their annual dues for periods of up to five (5) years at the rate of forty dollars (\$40.00) for the five (5) year period.

ARTICLE 7. - FINANCIAL PROCEDURE

7.01 No officer or member shall enter into contract or disburse any of the Section's funds, without the co-signature of a member of the Council. Disbursal of a sum in excess of Five Hundred Dollars (\$500.00) must be approved by a majority of the Council.

ARTICLE 8. - ELECTIONS

8.01 The President shall appoint one (1) nominating committee, instructing the committee to submit nominations for President-Elect, Vice President, and Secretary or Treasurer. These nominations shall be in the Secretary's hands before April 15. A candidate for office must be a member of the Section.

8.02 Ballots containing the nominations for officers shall be prepared by the Secretary and mailed to each member of the Section

on or before July 15. The ballots received by the Secretary before September 15 shall be counted by him. Receipt of a plurality of the votes cast for any office shall constitute election. In case of a tie vote, members of the current Council shall cast one additional deciding vote.

8.03 Results of balloting shall be announced at the Annual Meeting each October and the new officers shall enter upon duty on January 1 of the next calendar year.

ARTICLE 9. - BUSINESS REPRESENTATIVES

9.1 The Secretary shall appoint one representative from each group of members in each local geological society affiliated with the Gulf Coast Association of Geological Societies and in other localities as needed. Each representative shall have an up-to-date list of the members residing in the representative's vicinity. The Secretary will notify these members concerning any matter of Section policy which may be relayed to him by the President and shall have the authority to convene a meeting of those members to determine their views concerning Section affairs. The representative will report the results of such meetings to the President of the Section. The representative will cooperate with the Section Editor in the soliciting of papers to be presented at the Annual Meeting and with the Chairman of the Membership Committee in recruiting new members for the Section.

ARTICLE 10. - AUDIT

10.01 The President shall appoint an Auditing Committee which shall review the accounts presented by the Treasurer. The approval of the Treasurer's books by the committee shall be required before the final report will be accepted.

The Constitution of the GCSSEPM was originally adopted in 1954 and was amended in 1960, 1962, 1966, 1969, 1971, 1972, 1974, and 1981. The Section was incorporated under the laws of the State of Texas in 1981, and these Bylaws were adopted at that time in place of the original Constitution and its amendments. They were amended in 1984, 1990, 1991, 1996, and 1997. These Bylaws embody all of the provisions of the original Constitution and its amendments.